

CLASSIFICATION OF SERVICE

Cogeneration and Small Power Production Power Purchase Rate Schedule Over 100 KW

AVAILABILITY

Available only to qualified cogeneration or small power production facilities with a design capacity of over 100 KW which have executed a contract for the sale of power to Blue Grass Energy Cooperative Corporation and East Kentucky Power Cooperative for the purchase of electric power by East Kentucky Power Cooperative.

RATE SCHEDULE

1. Capacity

- a. \$8.47 per KW per year is applicable if co generator or small power producer is dispatched by East Kentucky Power Cooperative.
- b. \$0.00110 per KWH is applicable if cogenerator or small power producer is not dispatched by East Kentucky Power Cooperative.

2. Energy - A base payment per KWH is listed below for a time differentiated basis or a non-time differentiated basis for the specified years.

a. Time Differentiated Rates:

C6/1/09

Year	Winter		Summer	
	On-Peak	Off-Peak	On-Peak	Off-Peak
2005	\$0.04565	\$0.03311	\$0.04093	\$0.01991
2006	\$0.04280	\$0.03116	\$0.04304	\$0.02115
2007	\$0.04479	\$0.03179	\$0.04251	\$0.02129
2008	\$0.04256	\$0.02929	\$0.04506	\$0.01874
2009	\$0.03876	\$0.02682	\$0.03901	\$0.01667

b. Non-Time Differentiated Rates:

Year	2005	2006	2007	2008	2009
Rate	\$0.03502	\$0.03437	\$0.03498	\$0.03360	\$0.03014

The On-Peak and off-peak energy rates are applicable during the hours listed below for each season:

Months	On-Peak Hours	Off-Peak Hours
May through September	10:00 a.m. to 10:00 p.m.	10:00 p.m. to 10:00 a.m.
October through April	7:00 a.m. to 12:00 noon 5:00 p.m. to 10:00 p.m.	10:00 p.m. to 7:00 a.m. 12:00 noon to 5:00 p.m.

PUBLIC SERVICE COMMISSION
OF KENTUCKY
EFFECTIVE
9/1/2008
PURSUANT TO 807 KAR 5:011
September 9, 2008

DATE OF ISSUE: April 11, 2008

DATE EFFECTIVE: September 9, 2008

ISSUED BY: *J. David Smith*
(Name of Officer)

TITLE: *Stephanie Dumb...*
By: *Stephanie Dumb...*
Executive Director

Issued by authority of an Order of the Public Service Commission
in Case No.: 2008-00011 Dated: August 28, 2008

BLUE GRASS ENERGY
COOPERATIVE CORPORATION

FOR ENTIRE TERRITORY SERVED
P.S.C. KY NO. 2
ORIGINAL SHEET NO. 2
CANCELLING P.S.C. KY NO. 1
ORIGINAL SHEET NO. 2

CLASSIFICATION OF SERVICE

Cogeneration and Small Power Production Power Purchase Rate Schedule Over 100 KW

TERMS AND CONDITIONS

1. All power from a Qualifying Facility (QF) will be sold only to East Kentucky Power Cooperative.
2. Seller must provide good quality electric power within reasonable range of voltage, frequency, flicker, harmonic currents, and power factor.
3. Qualifying Facility (QF) shall provide reasonable protection for the EKPC and Blue Grass Energy Cooperative Corporation's system.
4. Qualifying Facility (QF) shall design, construct, install, own, operate, and maintain the qualifying facility in accordance with all applicable codes, laws, regulation and generally accepted utility practice.
5. Qualifying Facility (QF) shall reimburse EKPC & Blue Grass Energy Cooperative Corporation for all costs as a result of interconnecting with the QF, including operation, maintenance, administration and billing.
6. Qualifying Facility (QF) shall obtain insurance in at least the following minimum amounts for each occurrence:
 - a. Public Liability for Bodily Injury - \$1,000,000.00
 - b. Property Damage - \$500,000.00
7. Initial contract term shall be for a minimum of twenty years.
8. Qualifying Facilities proposing to supply as available (non-firm) electric power shall not be entitled to a capacity payment.

C 6/1/09

PUBLIC SERVICE COMMISSION OF KENTUCKY EFFECTIVE 9/1/2008	
PURSUANT TO 807 KAR 5:011	
DATE OF ISSUE: April 11, 2008	DATE EFFECTIVE: September 1, 2008
ISSUED BY: <u>[Signature]</u> (Name of Officer)	TITLE: <u>[Signature]</u> By: <u>[Signature]</u> Executive Director
Issued by authority of an Order of the Public Service Cc in Case No.: 2008-00011 Dated: August 28, 2008	

CLASSIFICATION OF SERVICE

Cogeneration and Small Power Production Power Purchase Rate Schedule Less than 100 KW

AVAILABILITY

Available only to qualified cogeneration or small power production facilities with a design capacity of less than 100 KW which have executed a contract for the sale of power to Blue Grass Energy Cooperative Corporation and East Kentucky Power Cooperative for the purchase of electric power by East Kentucky Power Cooperative.

RATE SCHEDULE

1. Capacity

- a. \$8.47 per KW per year is applicable if co generator or small power producer is dispatched by East Kentucky Power Cooperative.
- b. \$0.00110 per KWH is applicable if cogenerator or small power producer is not dispatched by East Kentucky Power Cooperative.

2. Energy - A base payment per KWH is listed below for a time differentiated basis or a non-time differentiated basis for the specified years.

a. Time Differentiated Rates:

Year	Winter		Summer	
	On-Peak	Off-Peak	On-Peak	Off-Peak
2005	\$0.04565	\$0.03311	\$0.04093	\$0.01991
2006	\$0.04280	\$0.03116	\$0.04304	\$0.02115
2007	\$0.04479	\$0.03179	\$0.04251	\$0.02129
2008	\$0.04256	\$0.02929	\$0.04506	\$0.01874
2009	\$0.03876	\$0.02682	\$0.03901	\$0.01667

b. Non-Time Differentiated Rates:

Year	2005	2006	2007	2008	2009
Rate	\$0.03502	\$0.03437	\$0.03498	\$0.03360	\$0.03014

The On-Peak and off-peak energy rates are applicable during the hours listed below for each season C6/1/09

Months	On-Peak Hours	Off-Peak Hours
May through September	10:00 a.m. to 10:00 p.m.	10:00 p.m. to 10:00 a.m.
October through April	7:00 a.m. to 12:00 noon 5:00 p.m. to 10:00 p.m.	10:00 p.m. to 7:00 a.m. 12:00 noon to 5:00 p.m.

PUBLIC SERVICE COMMISSION
OF KENTUCKY
EFFECTIVE
9/1/2008
PURSUANT TO 807 KAR 5:011
SECTION 1(20081)

DATE OF ISSUE: April 11, 2008

DATE EFFECTIVE: September 1, 2008

ISSUED BY: [Signature]
(Name of Officer)

TITLE: [Signature]
By: [Signature]
Executive Director

Issued by authority of an Order of the Public Service Commission
in Case No.: 2008-00011 Dated: August 28, 2008

Blue Grass Energy
Cooperative Corporation

For Area Served
P.S.C. No. 2
Original Sheet No. 4
Canceling P.S.C. No. 1
Original Sheet No. 4

The on-peak and off-peak energy rates are applicable during the hours listed below for each season:

Winter (October - April)

On-Peak 7:00 a.m. - 12:00 noon
5:00 p.m. - 10:00 p.m.

Off-Peak 12:00 noon - 5:00 p.m.
10:00 p.m. - 7:00 a.m.

Summer (May - September)

On-Peak 10:00 a.m. - 10:00 p.m.

Off-Peak 10:00 p.m. - 10:00 a.m.

TERMS AND CONDITIONS

1. All power from a Qualifying Facility (QF) will be sold only to EKPC.
2. Seller must provide good quality electric power within a reasonable range of voltage, frequency, flicker, harmonic currents, and power factor.
3. Qualifying Facility (QF) shall provide reasonable protection for EKPC and Blue Grass Energy Cooperative Corporation.
4. Qualifying Facility (QF) shall design, construct, install, own, operate, and maintain the Qualifying Facility in accordance with all applicable codes, laws, regulations, and generally accepted utility practices.
5. Qualifying Facility shall reimburse EKPC and Blue Grass Energy Cooperative Corporation for all costs incurred as a result of interconnecting with the QF, including operation, maintenance, administration, and billing.

C6/1/09

DATE OF ISSUE May 7, 2008

DATE EFFECTIVE June 1, 2008

ISSUED BY [Signature] TITLE: Vice President & CFO

Issued by authority of an Order of the Public Service Commission of
Case No. 2008-00128 Dated April 28, 2008

PUBLIC SERVICE COMMISSION
OF KENTUCKY

6/1/2008

PURSUANT TO 807 KAR 5:011
SECTION 9 (1)

By [Signature]
Executive Director

Blue Grass Energy
Cooperative Corporation

For Area Served
P.S.C. No. 2
Original Sheet No. 4a
Canceling P.S.C. No. 1
Original Sheet No. 4

-
6. Qualifying Facility shall obtain insurance in the following minimum amounts for each occurrence:
 - a. Public Liability for Bodily Injury - \$1,000,000.00
 - b. Property Damage - \$500,000.00
 7. Initial contract term shall be for a minimum of five years. (N)
 8. Qualifying Facilities proposing to supply as available (non-firm) electric power shall not be entitled to a capacity payment.
 9. Qualifying cogeneration and small power production facilities must meet the definition set forth in 807 KAR 5:054 to be eligible for this tariff. (N)
 10. Updated rates will be filed with the Public Service Commission of Kentucky by March 31 of each year. (N)

C 6/1/09

DATE OF ISSUE May 7, 2008

DATE EFFECTIVE June 1, 2008 6/1/2008

ISSUED BY *J. Donald Smith* TITLE: Vice President & CFO

PUBLIC SERVICE COMMISSION
OF KENTUCKY
EFFECTIVE
PURSUANT TO 807 KAR 5:011
SECTION 9 (1)

Issued by authority of an Order of the Public Service Commission of
Case No. 2008-00128 Dated April 28, 2008

By *Stephanie Dumb*
Executive Director

CLASSIFICATION OF SERVICE

GS-2 Off-Peak Retail Marketing Rate (ETS)

AVAILABILITY

Available to consumers eligible for Tariff GS-1, Residential and Farm Schedule. The electric power and energy furnished under Tariff GS-2, Off Peak Retail Marketing Rate shall be separately metered for each point of delivery. Other power and energy furnished will be billed under GS-1, Residential and Farm Schedule.

RATES

All kWh/Month: \$0.04914 kWh

SCHEDULE OF HOURS

This rate is only applicable for the below listed off-peak hours:

CANCELLED
AUG 01 2009
KENTUCKY PUBLIC
SERVICE COMMISSION

Months
October through April

Hours Applicable for Demand Billing - EST

12:00 noon to 5:00 p.m.

10:00 p.m. to 7:00 a.m.

May through September

10:00 p.m. to 10:00 a.m.

FUEL ADJUSTMENT CLAUSE

All rates are applicable to the Fuel Adjustment Clause and may be increased or decreased by and amount per KWH equal to the fuel adjustment amount per KWH as billed by the Wholesale Power Supplier, plus an allowance for line losses. The allowance for line loss will not exceed 10% and is based on twelve-month moving average of such losses. This Fuel Clause is subject to all applicable provisions as set out in 807 KAR 5.056.

DELAYED PAYMENT CHARGE

The above rates are net, the gross rates being 7.5% higher. In the event the current monthly bill is not paid within 15 days from the date of the bill, the gross rates shall apply.

TERMS AND CONDITIONS

This Tariff is subject to the same terms and conditions as described in Tariff GS-1, Residential and Farm. This rate applies to only programs which are expressly approved by the Public Service Commission to be offered under the Marketing Rate of East Kentucky Power Cooperative's wholesale power rate. Effective January 1, 2009 all consumers under this rate will be switched to the GS-3 Residential and Farm Time-of Day Rate or the GS-1 Residential and Farm Rate. This tariff is no longer available for new installations.

PUBLIC SERVICE COMMISSION
OF KENTUCKY
EFFECTIVE
4/1/2009

PURSUANT TO 807 KAR 5:011

DATE OF ISSUE: March 26, 2009

DATE EFFECTIVE: April 1, 2009

ISSUED BY: *J. Donald Smith*
(Name of Officer)

TITLE: CFO
By: *J. D. Brown*
Executive Director

Issued by authority of an Order of the Public Service Commission of Kentucky
in Case No.: 2008-00411 Dated March 31, 2009

CLASSIFICATION OF SERVICE

GS-2 Off-Peak Retail Marketing Rate (ETS)

AVAILABILITY

Available to consumers eligible for Tariff GS-1, Residential and Farm Schedule. The electric power and energy furnished under Tariff GS-2, Off Peak Retail Marketing Rate shall be separately metered for each point of delivery. Other power and energy furnished will be billed under GS-1, Residential and Farm Schedule.

RATES

All kWh/Month: \$0.04595 kWh

SCHEDULE OF HOURS

This rate is only applicable for the below listed off-peak hours:

CANCELLED
APR 01 2009
KENTUCKY PUBLIC
SERVICE COMMISSION

Months	Hours Applicable for Demand Billing - EST
October through April	12:00 noon to 5:00 p.m. 10:00 p.m. to 7:00 a.m.
May through September	10:00 p.m. to 10:00 a.m.

FUEL ADJUSTMENT CLAUSE

All rates are applicable to the Fuel Adjustment Clause and may be increased or decreased by and amount per KWH equal to the fuel adjustment amount per KWH as billed by the Wholesale Power Supplier, plus an allowance for line losses. The allowance for line loss will not exceed 10% and is based on twelve-month moving average of such losses. This Fuel Clause is subject to all applicable provisions as set out in 807 KAR 5.056.

DELAYED PAYMENT CHARGE

The above rates are net, the gross rates being 7.5% higher. In the event the current monthly bill is not paid within 15 days from the date of the bill, the gross rates shall apply.

TERMS AND CONDITIONS

This Tariff is subject to the same terms and conditions as described in Tariff GS-1, Residential and Farm. This rate applies to only programs which are expressly approved by the Public Service Commission to be offered under the Marketing Rate of East Kentucky Power Cooperative's wholesale power rate. Effective January 1, 2009 all consumers under this rate will be switched to the GS-3 Residential and Farm Time-of Day Rate or the GS-1 Residential and Farm Rate. This tariff is no longer available for new installations.

PUBLIC SERVICE COMMISSION
OF KENTUCKY
EFFECTIVE
9/1/2008
PURSUANT TO 807 KAR 5:011
SECTION 9, (2008)

DATE OF ISSUE: April 11, 2008

DATE EFFECTIVE: September 1, 2008

ISSUED BY: *Donald M. ...*
(Name of Officer)

TITLE
By *Stephanie ...*
Executive Director

Issued by authority of an Order of the Public Service Co
in Case No.: 2008-00011 Dated: August 28, 2008

BLUE GRASS ENERGY
COOPERATIVE CORPORATION

FOR ENTIRE TERRITORY SERVED
P.S.C. KY NO. 2
ORIGINAL SHEET NO. 6
CANCELLING P.S.C. KY NO. 1
ORIGINAL SHEET NO. 6, 35, & 52

CLASSIFICATION OF SERVICE

GS-1 (Residential and Farm)

APPLICABLE

Entire Territory Served

AVAILABILITY

Available to all residential and farm consumers. The capacity on individual motors served under this schedule may not exceed ten (10) horsepower.

TYPE OF SERVICE

Single-phase, 60 cycles, at available secondary voltage.

RATES

Customer Charge	\$9.36 per meter, per month
Energy Charge per kWh	\$0.08189

CANCELLED
AUG 01 2009
KENTUCKY PUBLIC
SERVICE COMMISSION

FUEL ADJUSTMENT CLAUSE

All rates are applicable to the Fuel Adjustment Clause and may be increased or decreased by and amount per KWH equal to the fuel adjustment amount per KWH as billed by the Wholesale Power Supplier, plus an allowance for line losses. The allowance for line loss will not exceed 10% and is based on twelve-month moving average of such losses. This Fuel Clause is subject to all applicable provisions as set out in 807 KAR 5.056.

MINIMUM MONTHLY CHARGE

The minimum monthly charge under this tariff shall be the customer charge.

DELAY PAYMENT CHARGE

The above rates are net, the gross rates being 7.5% higher. In the event the current monthly bill is not paid within 15 days from the date of the bill, the gross rates shall apply.

PUBLIC SERVICE COMMISSION
OF KENTUCKY
EFFECTIVE
4/1/2009
PURSUANT TO 807 KAR 5:011
SECTION 6 (1)

DATE OF ISSUE: March 26, 2009

DATE EFFECTIVE: April 1, 2009

ISSUED BY: *J. Donald Smith*
(Name of Officer)

TITLE: CFO
By: *J. D. Brown*
Executive Director

Issued by authority of an Order of the Public Service Commission

in Case No.: 2008-00411 Dated: March 31, 2009

BLUE GRASS ENERGY
COOPERATIVE CORPORATION

FOR ENTIRE TERRITORY SERVED
P.S.C. KY NO. 2
ORIGINAL SHEET NO. 6
CANCELLING P.S.C. KY NO. 1
ORIGINAL SHEET NO. 6, 35, & 52

CLASSIFICATION OF SERVICE

GS-1 (Residential and Farm)

APPLICABLE

Entire Territory Served

AVAILABILITY

Available to all residential and farm consumers. The capacity on individual motors served under this schedule may not exceed ten (10) horsepower.

TYPE OF SERVICE

Single-phase, 60 cycles, at available secondary voltage.

RATES

Customer Charge	\$8.75 per meter, per month
Energy Charge per kWh	\$0.07658

CANCELLED
APR 01 2009
KENTUCKY PUBLIC
SERVICE COMMISSION

FUEL ADJUSTMENT CLAUSE

All rates are applicable to the Fuel Adjustment Clause and may be increased or decreased by and amount per KWH equal to the fuel adjustment amount per KWH as billed by the Wholesale Power Supplier, plus an allowance for line losses. The allowance for line loss will not exceed 10% and is based on twelve-month moving average of such losses. This Fuel Clause is subject to all applicable provisions as set out in 807 KAR 5.056.

MINIMUM MONTHLY CHARGE

The minimum monthly charge under this tariff shall be the customer charge.

DELAY PAYMENT CHARGE

The above rates are net, the gross rates being 7.5% higher. In the event the current monthly bill is not paid within 15 days from the date of the bill, the gross rates shall apply.

PUBLIC SERVICE COMMISSION
OF KENTUCKY
EFFECTIVE
9/1/2008

PURSUANT TO 807 KAR 5:011

DATE OF ISSUE: April 11, 2008

DATE EFFECTIVE: September 1, 2008

ISSUED BY:

Donald Math
(Name of Officer)

TITLE

By

Stephanie Hunter
Executive Director

Issued by authority of an Order of the Public Service Cc

in Case No.: 2008-00011

Dated: August 28, 2008

CLASSIFICATION OF SERVICE

GS-3 (Residential and Farm Time-of-Day Rate)

APPLICABLE
Entire Territory Served

AVAILABILITY
Available to all consumers eligible for the Tariff GS-1, Residential and Farm. The capacity on individual motors served under this schedule may not exceed ten (10) horsepower.

TYPE OF SERVICE
Single-phase, 60 cycles, at available secondary voltage.

RATES:

Customer Charge	\$9.36 per meter, per month
<u>Energy Charge per kWh</u>	
<u>On-peak energy</u>	<u>\$0.11095</u>
<u>Off-peak energy</u>	<u>\$0.07206</u>

On-Peak Hours and Off-Peak Hours
Local Prevailing Time

On-peak hours are applicable to weekdays only. All weekend hours are off-peak hours.

<u>Months</u>	<u>On-Peak Hours</u>	<u>Off-Peak Hours</u>
<u>May through September</u>	<u>10:00 a.m. to 10:00 p.m.</u>	<u>10:00 p.m. to 10:00 a.m.</u>
<u>October through April</u>	<u>7:00 a.m. to 12:00 noon</u> <u>5:00 p.m. to 10:00 p.m.</u>	<u>10:00 p.m. to 7:00 a.m.</u> <u>12:00 noon to 5:00 p.m.</u>

FUEL ADJUSTMENT CLAUSE
All rates are applicable to the Fuel Adjustment Clause and may be increased or decreased by and amount per KWH equal to the fuel adjustment amount per KWH as billed by the Wholesale Power Supplier, plus an allowance for line losses. The allowance for line loss will not exceed 10% and is based on twelve-month moving average of such losses. This Fuel Clause is subject to all applicable provisions as set out in 807 KAR 5.056.

MINIMUM MONTHLY CHARGES
The minimum monthly charge under this tariff shall be the customer charge.

C10113109

DELAY PAYMENT CHARGE
The above rates are net, the gross rates being 7.5% higher. In the event the current monthly bill is not paid within 15 days from the date of the bill, the gross rates shall apply.

PUBLIC SERVICE COMMISSION
OF KENTUCKY
EFFECTIVE
8/1/2009
PURSUANT TO 807 KAR 5:011
SECTION 1

DATE OF ISSUE: March 26, 2009 DATE EFFECTIVE: August 1, 2009

ISSUED BY: J. J. [Signature] TITLE: CFO
(Name of Officer) By: [Signature] Executive Director

Issued by authority of an Order of the Public Service Commission
in Case No.: 2008-00524 Dated: July 15, 2009

BLUE GRASS ENERGY
COOPERATIVE CORPORATION

FOR ENTIRE TERRITORY SERVED
P.S.C. KY NO. 2
ORIGINAL SHEET NO. 8
CANCELLING P.S.C. KY NO. 1
ORIGINAL SHEET NO. 8

CLASSIFICATION OF SERVICE

GS-3 (Residential and Farm Time-of-Day Rate)

APPLICABLE

Entire Territory Served

AVAILABILITY

Available to all consumers eligible for the Tariff GS-1, Residential and Farm. The capacity on individual motors served under this schedule may not exceed ten (10) horsepower.

TYPE OF SERVICE

Single-phase, 60 cycles, at available secondary voltage.

RATES:

Customer Charge	\$9.36 per meter, per month
<u>Energy Charge per kWh</u>	
On-peak energy	\$0.10028
Off-peak energy	\$0.06139

CANCELLED
AUG 01 2009
KENTUCKY PUBLIC
SERVICE COMMISSION

On-Peak Hours and Off-Peak Hours

<u>Months</u>	<u>On-Peak Hours</u>	<u>Off-Peak Hours</u>
May through September	10:00 a.m. to 10:00 p.m.	10:00 p.m. to 10:00 a.m.
October through April	7:00 a.m. to 12:00 noon 5:00 p.m. to 10:00 p.m.	10:00 p.m. to 7:00 a.m. 12:00 noon to 5:00 p.m.

FUEL ADJUSTMENT CLAUSE

All rates are applicable to the Fuel Adjustment Clause and may be increased or decreased by and amount per KWH equal to the fuel adjustment amount per KWH as billed by the Wholesale Power Supplier, plus an allowance for line losses. The allowance for line loss will not exceed 10% and is based on twelve-month moving average of such losses. This Fuel Clause is subject to all applicable provisions as set out in 807 KAR 5.056.

MINIMUM MONTHLY CHARGES

The minimum monthly charge under this tariff shall be the customer charge.

DELAY PAYMENT CHARGE

The above rates are net, the gross rates being 7.5% higher. In the event the current monthly bill is not paid within 15 days from the date of the bill, the gross rates shall apply.

PUBLIC SERVICE COMMISSION
OF KENTUCKY
EFFECTIVE
4/1/2009
PURSUANT TO 807 KAR 5:011
SECTION 9 (1)
By *[Signature]* CFO
Executive Director

DATE OF ISSUE: March 26, 2009
ISSUED BY: *[Signature]*
(Name of Officer)

DATE EFFECTIVE: April 1, 2009
TITLE: CFO
By *[Signature]*
Executive Director

Issued by authority of an Order of the Public Service Commission
in Case No.: 2008-00411 Dated: March 31, 2009

CLASSIFICATION OF SERVICE

GS-3 (Residential and Farm Time-of-Day Rate)

APPLICABLE

Entire Territory Served

AVAILABILITY

Available to all consumers eligible for the Tariff GS-1, Residential and Farm. The capacity on individual motors served under this schedule may not exceed ten (10) horsepower.

TYPE OF SERVICE

Single-phase, 60 cycles, at available secondary voltage.

RATES:

Customer Charge	\$8.75 per meter, per month
<u>Energy Charge per kWh</u>	
<u>On-peak energy</u>	\$0.09377
<u>Off-peak energy</u>	\$0.05741

CANCELLED
APR 01 2009
KENTUCKY PUBLIC
SERVICE COMMISSION

On-Peak Hours and Off-Peak Hours

<u>Months</u>	<u>On-Peak Hours</u>	<u>Off-Peak Hours</u>
<u>May through September</u>	<u>10:00 a.m. to 10:00 p.m.</u>	<u>10:00 p.m. to 10:00 a.m.</u>
<u>October through April</u>	<u>7:00 a.m. to 12:00 noon</u> <u>5:00 p.m. to 10:00 p.m.</u>	<u>10:00 p.m. to 7:00 a.m.</u> <u>12:00 noon to 5:00 p.m.</u>

FUEL ADJUSTMENT CLAUSE

All rates are applicable to the Fuel Adjustment Clause and may be increased or decreased by and amount per KWH equal to the fuel adjustment amount per KWH as billed by the Wholesale Power Supplier, plus an allowance for line losses. The allowance for line loss will not exceed 10% and is based on twelve-month moving average of such losses. This Fuel Clause is subject to all applicable provisions as set out in 807 KAR 5.056.

MINIMUM MONTHLY CHARGES

The minimum monthly charge under this tariff shall be the customer charge.

DELAY PAYMENT CHARGE

The above rates are net, the gross rates being 7.5% higher. In the event the current monthly bill is not paid within 15 days from the date of the bill, the gross rates shall apply.

PUBLIC SERVICE COMMISSION
OF KENTUCKY
EFFECTIVE
9/1/2008
PURSUANT TO 807 KAR 5:011
September 1, 2008

DATE OF ISSUE: April 11, 2008

DATE EFFECTIVE: September 1, 2008

ISSUED BY: [Signature]
(Name of Officer)

TITLE
By [Signature]
Executive Director

Issued by authority of an Order of the Public Service Commission
in Case No.: 2008-00011 Dated August 28, 2008

BLUE GRASS ENERGY
COOPERATIVE CORPORATION

FOR ENTIRE TERRITORY SERVED
P.S.C. KY NO. 2
ORIGINAL SHEET NO. 9
CANCELLING P.S.C. KY NO. 1
ORIGINAL SHEET NO. 9, 36, 54, & 55

CLASSIFICATION OF SERVICE

SC-1 General Service (0-100 KW)

APPLICABLE

Entire territory served

AVAILABILITY

Available for general service including single phase non-residential or three-phase commercial and three-phase farm service up to 100 kW.

TYPE OF SERVICE

Single-phase and three-phase, 60 cycles, at available secondary voltages. Motors having a rated capacity in excess of 10 horsepower must be three-phase unless specially approved by the Cooperative. Consumer's equipment shall operate in such a way that it does not cause electrical disturbances to other consumers.

RATE

Demand Charge

First 10 KW of Billing Demand	No charge
Over 10 KW of Billing Demand	\$ 7.49

Energy Charge

All KWH	\$0.07644
---------	-----------

Customer Charge	\$26.74
-----------------	---------

CANCELLED
AUG 01 2009
KENTUCKY PUBLIC
SERVICE COMMISSION

FUEL ADJUSTMENT CLAUSE

All rates are applicable to the Fuel Adjustment Clause and may be increased or decreased by an amount per KWH equal to the fuel adjustment amount per KWH as billed by the Wholesale Power Supplier, plus an allowance for line losses. The allowance for line loss will not exceed 10% and is based on a twelve-month moving average of such losses. This Fuel Clause is subject to all applicable provisions as set out in 807 KAR 5.056.

DETERMINATION OF BILLING DEMAND

The billing demand shall be the maximum kilowatt demand established by the consumer for any period of fifteen consecutive minutes during the month for which the bill is rendered, as indicated or recorded by a demand meter and adjusted for power factor.

PUBLIC SERVICE COMMISSION
OF KENTUCKY
EFFECTIVE
4/1/2009
PURSUANT TO 807 KAR 5:011
SECTION 8 (1)
By *[Signature]* CFO
Executive Director
Commission of Kentucky

DATE OF ISSUE: March 26, 2009

DATE EFFECTIVE: April 1, 2009

ISSUED BY: *[Signature]*
(Name of Officer)

TITLE: CFO
By *[Signature]*

Issued by authority of an Order of the Public Service Commission of Kentucky
in Case No.: 2008-00411 Dated: March 31, 2009

BLUE GRASS ENERGY
COOPERATIVE CORPORATION

FOR ENTIRE TERRITORY SERVED
P.S.C. KY NO. 2
ORIGINAL SHEET NO. 9
CANCELLING P.S.C. KY NO. 1
ORIGINAL SHEET NO. 9, 36, 54, & 55

CLASSIFICATION OF SERVICE

SC-1 General Service (0-100 KW)

CANCELLED
(T)
APR 01 2009
KENTUCKY PUBLIC
SERVICE COMMISSION

APPLICABLE

Entire territory served

AVAILABILITY

Available for general service including single phase non-residential or three-phase commercial and three-phase farm service up to 100 kW. (T)

TYPE OF SERVICE

Single-phase and three-phase, 60 cycles, at available secondary voltages. Motors having a rated capacity in excess of 10 horsepower must be three-phase unless specially approved by the Cooperative. Consumer's equipment shall operate in such a way that it does not cause electrical disturbances to other consumers.

RATE

Demand Charge

First 10 KW of Billing Demand

No charge

Over 10 KW of Billing Demand

\$ 7.00

Energy Charge

All KWH

\$0.07148

Customer Charge

\$25.00

FUEL ADJUSTMENT CLAUSE

All rates are applicable to the Fuel Adjustment Clause and may be increased or decreased by an amount per KWH equal to the fuel adjustment amount per KWH as billed by the Wholesale Power Supplier, plus an allowance for line losses. The allowance for line loss will not exceed 10% and is based on a twelve-month moving average of such losses. This Fuel Clause is subject to all applicable provisions as set out in 807 KAR 5.056.

DETERMINATION OF BILLING DEMAND

The billing demand shall be the maximum kilowatt demand established by the consumer for any period of fifteen consecutive minutes during the month for which the bill is rendered, as indicated or recorded by a demand meter and adjusted for power factor.

PUBLIC SERVICE COMMISSION
OF KENTUCKY
EFFECTIVE
9/1/2008
PURSUANT TO 807 KAR 5:011
SECTION 9 (1)
008

DATE OF ISSUE: April 11, 2008

DATE EFFECTIVE

ISSUED BY:

J. L. ...
(Name of Officer)

TITLE

J. L. ...
CFO
Executive Director

Issued by authority of an Order of the Public Service Commission of Kentucky

in Case No.: 2008-00011

Dated: August 28, 2008

BLUE GRASS ENERGY
COOPERATIVE CORPORATION

FOR ENTIRE TERRITORY SERVED
P.S.C. KY NO. 2
ORIGINAL SHEET NO. 10
CANCELLING P.S.C. KY NO. 1
ORIGINAL SHEET NO. 10

CLASSIFICATION OF SERVICE

SC-1 General Service (0-100 KW)

(T)

POWER FACTOR ADJUSTMENT

The consumer agrees to maintain unity power factor as nearly as practical. Power factor may be measured at any time. Should such measurements indicate that the power factor at the time of this maximum demand is less than the wholesale power factor, the demand for billing purposes shall be demand as indicated or recorded by the demand meter multiplied by the wholesale power factor and divided by the measured power factor.

MINIMUM CHARGE

The minimum monthly charge under the above rate shall be the customer charge.

DELAYED PAYMENT CHARGE

The above rates are net, the gross rates being 7.5% higher. In the event the current monthly bill is not paid 15 days from the date of the bill, the gross rates shall apply.

SPECIAL RATES

Consumers requiring service only during certain seasons not exceeding 9 months per year may guarantee a minimum annual payment of 12 times the monthly charge determined in accordance with the foregoing section, in which case there shall be no minimum charge.

TEMPORARY SERVICE

Temporary service shall be supplied in accordance with the foregoing rate except that the consumer shall pay in addition to the foregoing charges the total cost of connecting and disconnecting service. A deposit in advance may be required for the full amount of the estimated bill for service, including the cost of connection and disconnection.

CANCELLED
APR 01 2009
KENTUCKY PUBLIC
SERVICE COMMISSION

PUBLIC SERVICE COMMISSION
OF KENTUCKY
EFFECTIVE
9/1/2008

PURSUANT TO 807 KAR 5.011

SECTION 9(1)
2008

DATE OF ISSUE: April 11, 2008

DATE EFFECTIVE: 9/1/2008

ISSUED BY: *J. Sandbrook*
(Name of Officer)

TITLE: *W. D. Brown* CFO
By: Executive Director

Issued by authority of an Order of the Public Service Commission of Kentucky

in Case No.: 2008-00011 Dated: August 28, 2008

BLUE GRASS ENERGY
COOPERATIVE CORPORATION

FOR ENTIRE TERRITORY SERVED
P.S.C. KY NO. 2
ORIGINAL SHEET NO. 11
CANCELLING P.S.C. KY NO. 1
ORIGINAL SHEET NO. 11, 37, 46, & 56

CLASSIFICATION OF SERVICE

LP-1 Large Power (101 KW to 500 KW)

APPLICABLE

Entire territory served

AVAILABILITY

Available to all consumers whose contracted kilowatt demand shall exceed 100 kW for all usage subject to the established rules and regulations.

CONDITIONS

An "Agreement for Electric Service" shall be executed by the consumer for service under this schedule.

TYPE OF SERVICE

Single-phase and three-phase, 60 cycles, at available primary or secondary voltages. Motors having a rated capacity in excess of 10 horsepower must be three-phase unless specifically approved by the Cooperative. Consumer's equipment shall operate in such a way that it does not cause electrical disturbances to other consumers.

RATE

Maximum Demand Charge

\$8.02 per month per KW of billing demand

Energy Charge (101 KW to 500 kW)

Customer Charge	\$53.47
ALL KWH	\$0.04973

CANCELLED
AUG 01 2009
KENTUCKY PUBLIC
SERVICE COMMISSION

DETERMINATION OF BILLING DEMAND

The Billing demand shall be the maximum kilowatt demand established by the consumer for any period of fifteen consecutive minutes during the month for which the bill is rendered, as indicated or recorded by a demand meter and adjusted for power factor as provided below.

POWER FACTOR ADJUSTMENT

The consumer agrees to maintain unity power factor as practicable. Power factor may be measured at any time. Should such measurements indicate that the power factor at the time of this maximum demand is less than the wholesale power factor, the demand for billing purposes shall be demand as indicated or recorded by the demand meter multiplied by the wholesale power factor and divided by the measured power factor.

PUBLIC SERVICE COMMISSION
OF KENTUCKY
EFFECTIVE
4/1/2009
PURSUANT TO 807 KAR 5:011
SECTION 8(1)
By *[Signature]* CFO
Executive Director
in Case No.: 2008-00411 Dated March 31, 2009

DATE OF ISSUE: March 26, 2009
ISSUED BY: *[Signature]*
(Name of Officer)

DATE EFFECTIVE: April 1, 2009
TITLE: CFO
By *[Signature]*
Executive Director

Issued by authority of an Order of the Public Service Commission of Kentucky
in Case No.: 2008-00411 Dated March 31, 2009

CLASSIFICATION OF SERVICE

LP-1 Large Power (101 KW to 500 KW)

APPLICABLE

Entire territory served

AVAILABILITY

Available to all consumers whose contracted kilowatt demand shall exceed 100 kW for all usage subject to the established rules and regulations.

CONDITIONS

An "Agreement for Electric Service" shall be executed by the consumer for service under this schedule.

TYPE OF SERVICE

Single-phase and three-phase, 60 cycles, at available primary or secondary voltages. Motors having a rated capacity in excess of 10 horsepower must be three-phase unless specifically approved by the Cooperative. Consumer's equipment shall operate in such a way that it does not cause electrical disturbances to other consumers.

RATE

Maximum Demand Charge

\$7.50 per month per KW of billing demand

Energy Charge (101 KW to 500 kW)

Customer Charge	\$50.00
ALL KWH	\$0.04650

CANCELLED
APR 01 2009
KENTUCKY PUBLIC
SERVICE COMMISSION

DETERMINATION OF BILLING DEMAND

The Billing demand shall be the maximum kilowatt demand established by the consumer for any period of fifteen consecutive minutes during the month for which the bill is rendered, as indicated or recorded by a demand meter and adjusted for power factor as provided below.

POWER FACTOR ADJUSTMENT

The consumer agrees to maintain unity power factor as practicable. Power factor may be measured at any time. Should such measurements indicate that the power factor at the time of this maximum demand is less than the wholesale power factor, the demand for billing purposes shall be demand as indicated or recorded by the demand meter multiplied by the wholesale power factor and divided by the measured power factor.

PUBLIC SERVICE COMMISSION
OF KENTUCKY
EFFECTIVE
9/1/2008

PURSUANT TO 807 KAR 5:011

DATE OF ISSUE: April 11, 2008

DATE EFFECTIVE: September 1, 2008

ISSUED BY:

J. L. Smith
(Name of Officer)

TITLE

By *Stephanie Dumb...*
Executive Director

Issued by authority of an Order of the Public Service C

in Case No.: 2008-00011

Dated: August 28, 2008

BLUE GRASS ENERGY
COOPERATIVE CORPORATION

FOR ENTIRE TERRITORY SERVED
P.S.C. KY NO. 2
ORIGINAL SHEET NO. 13
CANCELLING P.S.C. KY NO. 1
ORIGINAL SHEET NO. 13, 48, & 58

CLASSIFICATION OF SERVICE

LP-2 Large Power (over 500)

APPLICABLE

Entire territory served

AVAILABILITY

Available to all commercial and industrial consumers whose contracted kilowatt demand shall exceed 500 kW for all usage subject to the established rules and regulations.

CONDITIONS

An "Agreement for Purchase of Power" shall be executed by the consumer for service under this schedule.

TYPE OF SERVICE

Three-phase, 60 cycles, at available primary or secondary voltages. Consumer's equipment shall operate in such a way that it does not cause electrical disturbances to other consumers.

RATE

Maximum Demand Charge

\$8.02 per month per kW of billing demand

Energy Charge (over 500 kW)

Customer Charge	\$106.94
ALL KWH	\$0.04382

Special facilities charge as specified in the contract

CANCELLED
AUG 01 2009
KENTUCKY PUBLIC
SERVICE COMMISSION

DETERMINATION OF BILLING DEMAND

The billing demand shall be the maximum kilowatt demand established by the consumer for any period of fifteen consecutive minutes during the month for which the bill is rendered, as indicated or recorded by a demand meter and adjusted for power factor as provided below.

POWER FACTOR ADJUSTMENT

The consumer agrees to maintain unity power factor as nearly as practical. Power Factor may be measured at any time. Should such measurements indicate that the power factor at the time of the maximum demand is less than the wholesale power factor, the demand for billing purposes shall be demand as indicated or recorded by the demand meter multiplied by the wholesale power factor and divided by the measured power factor.

PUBLIC SERVICE COMMISSION
OF KENTUCKY
EFFECTIVE
4/1/2009
PURSUANT TO 807 KAR 5:011
SECTION 8(1)
By *[Signature]* CFO
Executive Director

DATE OF ISSUE: March 26, 2009

DATE EFFECTIVE: April 1, 2009

ISSUED BY: *[Signature]*
(Name of Officer)

TITLE: CFO
By *[Signature]*

Issued by authority of an Order of the Public Service Commission of Kentucky
in Case No.: 2008-00411 Dated March 31, 2009

BLUE GRASS ENERGY
COOPERATIVE CORPORATION

FOR ENTIRE TERRITORY SERVED
P.S.C. KY NO. 2
ORIGINAL SHEET NO. 13
CANCELLING P.S.C. KY NO. 1
ORIGINAL SHEET NO. 13, 48, & 58

CLASSIFICATION OF SERVICE

LP-2 Large Power (over 500)

CANCELLED
APR 01 2009
KENTUCKY PUBLIC
SERVICE COMMISSION

APPLICABLE

Entire territory served

AVAILABILITY

Available to all commercial and industrial consumers whose contracted kilowatt demand shall exceed 500 kW for all usage subject to the established rules and regulations.

CONDITIONS

An "Agreement for Purchase of Power" shall be executed by the consumer for service under this schedule.

TYPE OF SERVICE

Three-phase, 60 cycles, at available primary or secondary voltages. Consumer's equipment shall operate in such a way that it does not cause electrical disturbances to other consumers.

RATE

Maximum Demand Charge

\$7.50 per month per kW of billing demand

Energy Charge (over 500 kW)

Customer Charge	\$100.00
ALL KWH	\$0.04098

Special facilities charge as specified in the contract

DETERMINATION OF BILLING DEMAND

The billing demand shall be the maximum kilowatt demand established by the consumer for any period of fifteen consecutive minutes during the month for which the bill is rendered, as indicated or recorded by a demand meter and adjusted for power factor as provided below.

POWER FACTOR ADJUSTMENT

The consumer agrees to maintain unity power factor as nearly as practical. Power Factor may be measured at any time. Should such measurements indicate that the power factor at the time of the maximum demand is less than the wholesale power factor, the demand for billing purposes shall be demand as indicated or recorded by the demand meter multiplied by the wholesale power factor and divided by the measured power factor.

PUBLIC SERVICE COMMISSION
OF KENTUCKY
EFFECTIVE
9/1/2008

DATE OF ISSUE: April 11, 2008

DATE EFFECTIVE: September 1, 2008

ISSUED BY:

[Signature]
(Name of Officer)

TITLE:

[Signature]
Executive Director

Issued by authority of an Order of the Public Service Co
in Case No.: 2008-00011

Dated: August 28, 2008

PURSUANT TO 807 KAR 5:011

SECTION 2(1)

BLUE GRASS ENERGY
COOPERATIVE CORPORATION

FOR ENTIRE TERRITORY SERVED
P.S.C. KY NO. 2
ORIGINAL SHEET NO. 15
CANCELLING P.S.C. KY NO. 1
ORIGINAL SHEET NO. 15, 16, & 64

CLASSIFICATION OF SERVICE

OUTDOOR LIGHTS

APPLICABLE

Entire territory served

AVAILABILITY

Available to all consumers of the Cooperative subject to its established rules and regulations.

RATE PER LIGHT PER MONTH

175 Watt Mercury Vapor*	\$10.17
400 Watt Mercury Vapor*	\$16.46
400 Watt Metal Halide Directional Flood	\$15.51
400 Watt High Pressure Sodium Directional Flood*	\$16.31
100 Watt High Pressure Sodium – Shoebox Fixture (Metal Pole)	\$17.98
100 Watt High Pressure Sodium – Acom Fixture (Fiberglas Pole)	\$17.41
100 Watt High Pressure Sodium – Colonial Fixture	\$14.70
400 Watt High Pressure Sodium Cobra Head (Aluminum Pole)	\$21.82
70 Watt High Pressure Sodium (Ornamental)*	\$ 9.62
100 Watt High Pressure Sodium (Ornamental)*	\$10.69
250 Watt High Pressure Sodium (Ornamental)*	\$14.17
70 Watt High Pressure (Colonial) (15-foot mounting height)*	\$ 8.93
200 Watt High Pressure Sodium Cobra Head (Aluminum Pole)	\$14.44
100 Watt High Pressure Sodium Cobra Head (Aluminum Pole)	\$10.69
100 Watt High Pressure Sodium Open Bottom	\$10.19
250 Watt High Pressure Sodium Open Bottom	\$15.27

CANCELLED
AUG 01 2009
KENTUCKY PUBLIC
SERVICE COMMISSION

*Not available for new installation

ADDITIONAL ORNAMENTAL SERVICE

The Cooperative may, upon request, furnish ornamental poles/fixtures not listed in our current rates of the Cooperative's choosing, together with overhead wiring and all other equipment as needed. The Member will pay this additional cost prior to installation.

PUBLIC SERVICE COMMISSION
OF KENTUCKY
EFFECTIVE
4/1/2009
PURSUANT TO 807 KAR 5:011
SECTION 9.009

DATE OF ISSUE: March 26, 2009

DATE EFFECTIVE: April 1, 2009

ISSUED BY: Jill Madhatter
(Name of Officer)

TITLE: Jill Madhatter CFO
By: Jill Madhatter Executive Director

Issued by authority of an Order of the Public Service Commission
in Case No.: 2008-00411 Dated: March 31, 2009

CLASSIFICATION OF SERVICE

OUTDOOR LIGHTS

CANCELLED
APR 01 2009
KENTUCKY PUBLIC
SERVICE COMMISSION

APPLICABLE

Entire territory served

AVAILABILITY

Available to all consumers of the Cooperative subject to its established rules and regulations.

RATE PER LIGHT PER MONTH

175 Watt Mercury Vapor*	\$ 9.51
400 Watt Mercury Vapor*	\$15.39
400 Watt Metal Halide Directional Flood	\$14.50
400 Watt High Pressure Sodium Directional Flood*	\$15.25
100 Watt High Pressure Sodium – Shoebox Fixture (Metal Pole)	\$16.81
100 Watt High Pressure Sodium – Acorn Fixture (Fiberglass Pole)	\$16.28
100 Watt High Pressure Sodium – Colonial Fixture	\$13.75
400 Watt High Pressure Sodium Cobra Head (Aluminum Pole)	\$20.40
70 Watt High Pressure Sodium (Ornamental)*	\$ 9.00
100 Watt High Pressure Sodium (Ornamental)*	\$10.00
250 Watt High Pressure Sodium (Ornamental)*	\$13.25
70 Watt High Pressure (Colonial) (15-foot mounting height)*	\$ 8.35
200 Watt High Pressure Sodium Cobra Head (Aluminum Pole)	\$13.50
100 Watt High Pressure Sodium Cobra Head (Aluminum Pole)	\$10.00
100 Watt High Pressure Sodium Open Bottom	\$ 9.53
250 Watt High Pressure Sodium Open Bottom	\$14.28

*Not available for new installation

ADDITIONAL ORNAMENTAL SERVICE

The Cooperative may, upon request, furnish ornamental poles/fixtures not listed in our current rates of the Cooperative's choosing, together with overhead wiring and all other equipment as needed. The Member will pay this additional cost prior to installation.

PUBLIC SERVICE COMMISSION
OF KENTUCKY
EFFECTIVE
9/1/2008

PURSUANT TO 807 KAR 5:011
SECTION 1, 2008

DATE OF ISSUE: April 11, 2008

DATE EFFECTIVE: September 1, 2008

ISSUED BY: _____
(Name of Officer)

TITLE _____
By *Stephanie Rumber*
Executive Director

Issued by authority of an Order of the Public Service Co
in Case No.: 2008-00011 Dated: August 28, 2008

BLUE GRASS ENERGY
COOPERATIVE CORPORATION

FOR ENTIRE TERRITORY SERVED
P.S.C. KY NO. 2
ORIGINAL SHEET NO. 23
CANCELLING P.S.C. KY NO. 1
ORIGINAL SHEET NO. 23 & 50

CLASSIFICATION OF SERVICE

Large Industrial Rate - Schedule B-1

AVAILABILITY

Applicable to contracts with demands of 1,000 KW to 3,999 KW with a monthly energy usage equal to or greater than 425 hours per KW of billing demand.

MONTHLY RATE

Consumer Charge	\$1069.40
Demand Charge per KW of Contract Demand	\$ 6.65
Demand Charge per KW for Billing Demand in Excess of Contract Demand	\$ 9.25
Energy Charge per kWh	\$0 .04436

CANCELLED
AUG 01 2009
KENTUCKY PUBLIC
SERVICE COMMISSION

BILLING DEMAND

The monthly billing demand (kilowatt demand) shall be the contract demand plus any excess demand. Excess demand occurs when the consumer's peak demand, during the current month, exceeds the contract demand. The load center's peak demand is highest average rate at which energy is used during any fifteen-minute interval, in the below listed hours for each month, and adjusted for power factor as provided herein:

<u>Months</u>	<u>Hours Applicable for Demand Billing - EST</u>
October through April	7:00 a.m. to 12:00 noon 5:00 p.m. to 10:00 p.m.
May through September	10:00 a.m. to 10:00 p.m.

MINIMUM MONTHLY CHARGE

The minimum monthly charge shall not be less than the sum of (a) through (d) below:

- a. Customer Charge
- b. The product of the contract demand multiplied by the contract demand charge, plus the product of the demand in excess of the contract demand, multiplied by the in excess of contract demand charge.
- c. The product of the contract demand multiplied by 425 hours and the energy charge per KWH.
- d. Contract provisions that reflect special facilities requirements.

POWER FACTOR ADJUSTMENT

The consumer agrees to maintain unity power factor as nearly as practicable. Power factor may be measured at any time. Should such measurements indicate that the power factor at the time of the maximum demand is less than the minimum required wholesale power factor, the minimum required wholesale power factor shall be demand as indicated or recorded, multiplied by the minimum required wholesale power factor and divided by the measured power factor.

DATE OF ISSUE: March 26, 2009

DATE EFFECTIVE: April 1, 2009

ISSUED BY: *J. Donald McThe*
(Name of Officer)

TITLE: *J. D. Brown* CFO
By: Executive Director

Issued by authority of an Order of the Public Service Commission of Kentucky
in Case No.: 2008-00411 Dated: March 31, 2009

SECTION 9(1)
EFFECTIVE
4/1/2009
PURSUANT TO 807 KAR 5:011
SECTION 9(1)
2009

CLASSIFICATION OF SERVICE

Large Industrial Rate - Schedule B-1

AVAILABILITY

Applicable to contracts with demands of 1,000 KW to 3,999 KW with a monthly energy usage equal to or greater than 425 hours per kW of billing demand.

MONTHLY RATE

Consumer Charge	\$1000.00
Demand Charge per kW of Contract Demand	\$ 6.22
Demand Charge per kW for Billing Demand in Excess of Contract Demand	\$ 8.65
Energy Charge per kWh	\$0 .04148

CANCELLED
APR 01 2009
KENTUCKY PUBLIC
SERVICE COMMISSION

BILLING DEMAND

The monthly billing demand (kilowatt demand) shall be the contract demand plus any excess demand. Excess demand occurs when the consumer's peak demand, during the current month, exceeds the contract demand. The load center's peak demand is highest average rate at which energy is used during any fifteen-minute interval, in the below listed hours for each month, and adjusted for power factor as provided herein:

<u>Months</u>	<u>Hours Applicable for Demand Billing - EST</u>
October through April	7:00 a.m. to 12:00 noon 5:00 p.m. to 10:00 p.m.
May through September	10:00 a.m. to 10:00 p.m.

MINIMUM MONTHLY CHARGE

The minimum monthly charge shall not be less than the sum of (a) through (d) below:

- Customer Charge
- The product of the contract demand multiplied by the contract demand charge, plus the product of the demand in excess of the contract demand, multiplied by the in excess of contract demand charge.
- The product of the contract demand multiplied by 425 hours and the energy charge per KWH.
- Contract provisions that reflect special facilities requirements.

POWER FACTOR ADJUSTMENT

The consumer agrees to maintain unity power factor as nearly as practicable. Power factor may be measured at any time. Should such measurements indicate that the power factor at the time of the maximum demand is less than the minimum required wholesale power factor, the demand for billing purposes shall be demand as indicated or recorded, multiplied by the minimum required wholesale power factor and divided by the measured power factor.

DATE OF ISSUE: April 11, 2008

DATE EFFECTIVE: September 19, 2008

ISSUED BY: [Signature]
(Name of Officer)

TITLE: [Signature]
By [Signature]
Executive Director

Issued by authority of an Order of the Public Service Co
in Case No.: 2008-00011 Dated: August 28, 2008

PUBLIC SERVICE COMMISSION
OF KENTUCKY
EFFECTIVE
9/1/2008
PURSUANT TO 807 KAR 5:011
SECTION 7

BLUE GRASS ENERGY
COOPERATIVE CORPORATION

FOR ENTIRE TERRITORY SERVED
P.S.C. KY NO. 2
ORIGINAL SHEET NO. 25
CANCELLING P.S.C. KY NO. 1
ORIGINAL SHEET NO. 25 & 62

CLASSIFICATION OF SERVICE

Large Industrial Rate - Schedule B-2

AVAILABILITY

Applicable to contracts with demands of 4,000 KW and greater with a monthly energy usage equal to or greater than 425 hours per KW of contract demand.

TYPE OF SERVICE

Three-phase, 60 cycles, at available primary voltages. Consumer's equipment shall operate in such a way that it does not cause electrical disturbances to other consumers.

MONTHLY RATE

Customer Charge	\$2,138.80
Demand Charge per kW of Contract Demand	\$6.65
Demand Charge per kW for Billing Demand in Excess of Contract Demand	\$9.25
Energy Charge per kWh	\$0.03960

CANCELLED
AUG 01 2009
KENTUCKY PUBLIC
SERVICE COMMISSION

BILLING DEMAND

The monthly billing demand (kilowatt demand) shall be the contract demand plus any excess demand. Excess demand occurs when the consumer's peak demand, during the current month, exceeds the contract demand. The load center's peak demand is highest average rate at which energy is used during any fifteen-minute interval, in the below listed hours for each month, and adjusted for power factor as provided herein:

<u>Months</u>	<u>Hours Applicable for Demand Billing - EST</u>
October through April	7:00 a.m. to 12:00 noon 5:00 p.m. to 10:00 p.m.
May through September	10:00 a.m. to 10:00 p.m.

MINIMUM MONTHLY CHARGE

The minimum monthly charge shall not be less than the sum of (a) through (d) below:

- a. Customer Charge
- b. The product of the contract demand multiplied by the contract demand charge, plus the product of the demand in excess of the contract demand, multiplied by the in excess of contract demand charge.
- c. The product of the contract demand multiplied by 425 hours and the energy charge per kWh.
- d. Contract provisions that reflect special facilities requirements.

PUBLIC SERVICE COMMISSION
OF KENTUCKY
EFFECTIVE
4/1/2009
PURSUANT TO 807 KAR 5:011
SECTION 9(1)
APR 1 2009

DATE OF ISSUE: March 26, 2009

DATE EFFECTIVE: APR 1 2009

ISSUED BY: *J. J. M. Smith*
(Name of Officer)

TITLE: *J. J. M. Smith* CFO
By: *J. J. M. Smith*
Executive Director

Issued by authority of an Order of the Public Service Commission of Kentucky
in Case No.: 2008-00411 Dated: March 31, 2009

BLUE GRASS ENERGY
COOPERATIVE CORPORATION

FOR ENTIRE TERRITORY SERVED
P.S.C. KY NO. 2
ORIGINAL SHEET NO. 25
CANCELLING P.S.C. KY NO. 1
ORIGINAL SHEET NO. 25 & 62

CANCELLED
APR 01 2009
KENTUCKY PUBLIC
SERVICE COMMISSION

CLASSIFICATION OF SERVICE

Large Industrial Rate - Schedule B-2

AVAILABILITY

Applicable to contracts with demands of 4,000 KW and greater with a monthly energy usage equal to or greater than 425 hours per KW of contract demand.

TYPE OF SERVICE

Three-phase, 60 cycles, at available primary voltages. Consumer's equipment shall operate in such a way that it does not cause electrical disturbances to other consumers.

MONTHLY RATE

Customer Charge	\$2,000.00
Demand Charge per kW of Contract Demand	\$6.22
Demand Charge per kW for Billing Demand in Excess of Contract Demand	\$8.65
Energy Charge per kWh	\$0.03703

BILLING DEMAND

The monthly billing demand (kilowatt demand) shall be the contract demand plus any excess demand. Excess demand occurs when the consumer's peak demand, during the current month, exceeds the contract demand. The load center's peak demand is highest average rate at which energy is used during any fifteen-minute interval, in the below listed hours for each month, and adjusted for power factor as provided herein:

<u>Months</u>	<u>Hours Applicable for Demand Billing - EST</u>
October through April	7:00 a.m. to 12:00 noon 5:00 p.m. to 10:00 p.m.
May through September	10:00 a.m. to 10:00 p.m.

MINIMUM MONTHLY CHARGE

The minimum monthly charge shall not be less than the sum of (a) through (d) below:

- a. Customer Charge
- b. The product of the contract demand multiplied by the contract demand charge, plus the product of the demand in excess of the contract demand, multiplied by the in excess of contract demand charge.
- c. The product of the contract demand multiplied by 425 hours and the energy charge per kWh.
- d. Contract provisions that reflect special facilities requirements.

DATE OF ISSUE: April 11, 2008

DATE EFFECTIVE: September 1, 2008

ISSUED BY: *[Signature]*

(Name of Officer)

TITLE

By *[Signature]*
Executive Director

Issued by authority of an Order of the Public Service Commission

in Case No.: 2008-00011

Dated: August 28, 2008

PUBLIC SERVICE COMMISSION
OF KENTUCKY
EFFECTIVE
9/1/2008
PURSUANT TO 807 KAR 5:011
SECTION 1 (4)

CLASSIFICATION OF SERVICE

Interruptible Service

STANDARD RIDER

This Interruptible Rate is a rider to the Schedule LP-1 Large Power Rate, LP-2 Large Power Rate, B-1 Large Industrial Rate and B-2 Large Industrial Rate.

APPLICABLE

In all territory served by the Cooperative.

AVAILABILITY OF SERVICE

This schedule shall be made available at any load center, to any member who will contract for an interruptible demand of not less than 250 KW and not more than 20,000 KW, subject to a maximum number of hours of interruption per year and a notice period as listed below.

CANCELLED
APR 01 2009
KENTUCKY PUBLIC
SERVICE COMMISSION

MONTHLY RATES

A monthly demand credit per KW is to be based on the following matrix:

Notice Minutes	Annual Hours of Interruption		
	200	300	400
10	\$2.70	\$3.15	\$3.60
60	\$2.25	\$2.70	\$3.15

DETERMINATION OF MEASURED LOAD - BILLING DEMAND

The monthly billing demand shall be the highest average rate at which energy is used during any fifteen consecutive minute periods during the below listed hours:

Months
October through April

Hours Applicable for Demand Billing - EST

7:00 a.m. to 12:00 noon

5:00 p.m. to 10:00 p.m.

May through September

10:00 a.m. to 10:00 p.m.

The interruptible billing demand shall be equal to the amount by which the monthly billing demand exceeds the minimum billing demand as specified in the contract.

BLUE GRASS ENERGY

PUBLIC SERVICE COMMISSION
OF KENTUCKY
FOR ENTIRE TERRITORY SERVED

DATE OF ISSUE: April 11, 2008

DATE EFFECTIVE: September 1, 2008

ISSUED BY: [Signature]
(Name of Officer)

TITLE
By [Signature]
Executive Director

Issued by authority of an Order of the Public Service Commission
in Case No.: 2008-00011 Dated August 20, 2008

9/17/2008
PURSUANT TO 807 KAR 5:011
SECTION 9 (1)

**BLUE GRASS ENERGY
COOPERATIVE CORPORATION**

For Entire Territory Served
P.S.C.KY No. 1
Original Sheet No. 36
Cancelling P.S.C. No. _____
Sheet No. _____

RULES AND REGULATIONS

(44) BILL STATEMENT



A Touchstone Energy Cooperative

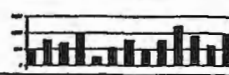
PO Box 990 • 1201 Lexington Road • Nicholasville KY 40340-0990
For Bill Questions Please Contact Your Local Office
Nicholasville: (502) 885-4194
Madison: (502) 823-1592
Harrison: (502) 234-3131 or (502) 942-7491
Farr Creek: (502) 530-2442 or (502) 972-7150
Office Hours Monday—Friday 7:30 a.m. to 4:30 p.m.

ACCOUNT NUMBER	ACCOUNT NAME	CLASS	DATE	TYPE	TELEPHONE	LOCATION		
123456-01	SAMPLE JOHN Q.	1	1	0	859-234-5555	123456		
SERVICE TO	PREVIOUS TO	READING	READING	TIME DATE	METER NUMBER	USAGE	CHARGES	
1/25/04	1/25/04	1000	2000	20	1/25/04	1	123456	1000
Fuel Adjustment @0.0080229							15.00	
Yard Light(s)							5.00	
Total Current Bill Due 6/15/04							22.50	
Previous Unpaid Balance (Disconnect Date 6/05/04)							8.29	
Total Amount Due							30.79	
(Current Bill Due Date Does Not Apply To The Previous Balance Due)								

TO BE PAID BY BANK DRAFT
FINAL BILL

COMPARISON	NO. DAYS	MONTH USAGE	PERCENT	PERCENT	TOTAL DUE NOW
CURRENT BILL PERIOD	30	900	50.0	22.51	30.79
PREVIOUS BILL PERIOD	30	900	50.0	22.50	
SAME PERIOD LAST YEAR	30	900	50.7	22.65	

DUPLICATE DATE 6/15/04
DUPLICATE DATE 6/15/04
AFTER DUE DATE PAY 33.87



Important Disconnection Notice:
Due to your previous unpaid balance, your electrical service will be disconnected if the previous unpaid balance is not paid by 6/30/04.
Visit us on the web at www.ogenergy.com
Your internet password is: JQH123

<p>* Allow ample time for delivery before the due date when making your payment. * Payment is not needed by before it receive bill. * Payment by check must include * To pay by Check Card please call your local office</p>	<p>Collecting Agents Associated—Citizens National Bank Farmers Bank & Trust Kentucky Bank Farmers Bank & Trust Madison—People's Bank & Trust Fayette—Central Bank & Trust Franklin—Farmers Bank & Capital Trust Harrison—United Bank & Trust Harrison—Kentucky Bank Madison—First National Bank of Brooksville</p>
<p>TO REPORT POWER OUTAGE CALL YOUR LOCAL OFFICE OR 1-888-655-4243</p>	<p>RATE SCHEDULE AVAILABLE UPON REQUEST</p> <p>0 Regular 1 Estimated 2 Minimum Est. 3 Minimum 4 Fixed 5 Prevail 6 Prevail Min 7 Levelload</p>

PLEASE BRING ENTIRE BILL IF PAYING IN PERSON. PLEASE DETACH AND RETURN BOTTOM PORTION IF PAYING BY MAIL.



ACCOUNT NUMBER	TOTAL DUE
123456-01	30.79
DUE DATE	AFTER DUE DATE PAY
6/15/04	33.87

FINAL BILL BANK DRAFT
PLEASE ENTER AMOUNT PAID \$

JOHN Q SAMPLE
12345 MAIN ST
NICHOLASVILLE KY 40348

Blue Grass Energy
PO Box 730
Cynthiana KY 41031-0730

C 5/29/09

DATE OF ISSUE: July 1, 2005
ISSUED BY: Dan Brewer
ADDRESS: P. O. Box 990, Nicholasville KY 40340-0990

DATE EFFECTIVE July 15, 2005
PURSUANT TO KAR 5:011
SECTION 9 (1)
Dan Brewer, President and CEO
By [Signature]
Executive Director



FOR ENTIRE TERRITORY SERVED
Community, Town or City

P.S.C. KY. NO. 2000200

BLUE GRASS ENERGY
COOPERATIVE CORPORATION

Original SHEET NO. 119

CLASSIFICATION OF SERVICE

RATES SCHEDULE NM – NET METERING

C 5/3/09

APPLICABILITY

Net metering is available to customer-generators who own, operate and maintain electrical generating facilities using solar energy designed to operate in parallel with the existing Blue Grass Energy electrical distribution system and be primarily intended to offset part or all of the customer-generator's own electrical requirements.

AVAILABILITY OF NET METERING SERVICE

An eligible customer-generator must be a member of and take electrical service from Blue Grass Energy. Blue Grass Energy will make this service available to customer-generators on a first-come, first-served basis until the cumulative generating capacity of net metered systems reaches one tenth of one percent (0.1%) of the Cooperative's single hour peak load during the previous year.

SERVICE CONDITIONS (TYPE OF SERVICE)

- a. The generating facility shall comply with all of the following requirements:
 - i. The generating facility must have a rated capacity of not more than fifteen (15) kilowatts.
 - ii. The generating facility must be owned and operated by the customer.
 - iii. The generating facility must be located on the customer's premises.
 - iv. The generating facility must be designed and installed to operate in parallel with Blue Grass Energy's electrical distribution system without adversely affecting the quality of service of other customers and without presenting safety hazards to Cooperative customers and Cooperative employees and agents, thereof.

- b. Prior to interconnection, the customer-generator shall complete the Application for Net Energy Metering, execute an Interconnection Agreement for Net Metering Service, enter into a Customer Net Energy Service Agreement, and pay any applicable fees, charges or costs as prescribed within this tariff prior to interconnection with the Blue Grass Energy distribution system.

DATE OF ISSUE February 25, 2005

DATE EFFECTIVE 4/1/2005

ISSUED BY *[Signature]*

TITLE Resident

BY AUTHORITY OF ORDER OF THE PUBLIC SERVICE COMMISSION

IN CASE NO. _____ DATED _____

By *[Signature]*
Executive Director

PUBLIC SERVICE COMMISSION
OF KENTUCKY
EFFECTIVE
PURSUANT TO 807 KAR 5:011
Resident (1)

FOR ENTIRE TERRITORY SERVED
Community, Town or City

P.S.C. KY. NO. 2000200

BLUE GRASS ENERGY
COOPERATIVE CORPORATION

Original SHEET NO. 120

CLASSIFICATION OF SERVICE

- c. Prior to interconnection, the customer-generator's electrical generating and interconnection equipment shall be installed in accordance with the manufacturer's specifications, shall have been tested by a nationally recognized testing laboratory as having met the testing requirements of IEEE Standard 1547, and shall meet all applicable safety and performance standards established in all applicable local and state building codes. Certification by a licensed electrician shall constitute acceptable proof that the customer-generator's electrical generating facility has been properly installed in accordance with above.
- d. The customer-generator is responsible for all equipment and installation costs associated with its electric generating facility and any modification costs to the facility that may be required by Blue Grass Energy for purposes of safety and reliability.
- e. When construction, modifications, or upgrades to the Blue Grass Energy distribution system are required to interconnect the customer-generator's electric generating facility, the customer-generator is responsible for all costs incurred by the Cooperative.
- f. The customer must provide and install a clearly labeled, Blue Grass Energy approved, lockable, visible-break, disconnect switch between the cooperative's distribution system and the customer-generator's electrical generating equipment. This disconnect switch must be accessible to the Cooperative at all times.
- g. Blue Grass Energy maintains the right to disconnect, without liability, the customer-generator for issues relating to safety and reliability.
- h. Blue Grass Energy maintains the right to verify proper installation and inspect the customer-generator's facilities to ensure continued safe operation of the electrical generating equipment and interconnection system at any time with reasonable advance notice to the customer-generator.
- i. Blue Grass Energy shall not be liable directly or indirectly for permitting or continuing to allow an attachment of a net metering facility, or for the acts or

CANCELLED
MAY 03 2009
KENTUCKY PUBLIC
SERVICE COMMISSION

DATE OF ISSUE February 25, 2005

DATE EFFECTIVE 4/1/2005

ISSUED BY *[Signature]*

TITLE PURSUANT TO 807 KAR 5:011

BY AUTHORITY OF ORDER OF THE PUBLIC SERVICE COMMISSION

IN CASE NO. _____ DATED _____

PUBLIC SERVICE COMMISSION
OF KENTUCKY
EFFECTIVE
SECTION (1)
By *[Signature]*
Executive Director

FOR ENTIRE TERRITORY SERVED

Community, Town or City

P.S.C. KY. NO. 2000200

BLUE GRASS ENERGY
COOPERATIVE CORPORATION

Original SHEET NO. 121

CLASSIFICATION OF SERVICE

omissions of the customer-generator that cause loss or injury, including death, to any third party.

EQUIPMENT OPERATION

The customer-generator's electrical generating and interconnection equipment shall comply with all applicable safety, performance, and power quality standards established by the Institute of Electrical and Electronic Engineers, the National Electrical Code, and the National Electrical Safety Code.

METERING

Net metered electricity shall be measured in accordance with standard metering practices established by Blue Grass Energy using metering equipment capable of measuring and recording energy flows, on a kWh basis, from the Cooperative to the customer-generator and from the customer-generator to the Cooperative, with each directional energy flow recorded independently. If time-of-day or time-of-use metering is used, the electricity fed back to the electric grid by the customer-generator shall be metered and accounted for at the specific time it is fed back to the electric grid in accordance with the time-of-day or time-of-use billing agreement currently in place. If the customer generator's existing electrical meter is not capable of registering the flow of electricity in two directions, the customer shall be responsible for all expenses involved in purchasing and installing a meter (or meters) that is able to register electricity flow in two directions. All metering shall be capable of working with any automatic meter reading systems used by Blue Grass Energy.

BILLING AND PAYMENT

For charges collected on the basis of metered registration, Blue Grass Energy shall, for each monthly billing period, determine the net meter registration of the customer-generator by comparing the directional energy flow in each direction. If the net meter registration shows that the deliveries of energy in kWh from the customer-generator to the Cooperative exceed the deliveries of energy in kWh from the Cooperative to the customer-generator, the net meter registration in kWh will be carried forward to the next monthly billing period as a Net Metering Credit, expressed in kWh. If the customer-generator has carried over a Net Metering Credit from one or more prior months, the net meter registration from the current month shall be added to the Net Metering Credit that exists from prior months.

CANCELLED
MAY 03 2009
KENTUCKY PUBLIC
SERVICE COMMISSION

DATE OF ISSUE February 26, 2005

DATE EFFECTIVE 4/1/2005

ISSUED BY [Signature]

TITLE REGULATORY (1)

BY AUTHORITY OF ORDER OF THE PUBLIC SERVICE COMMISSION

IN CASE NO. DATED

PUBLIC SERVICE COMMISSION OF KENTUCKY EFFECTIVE	
PURSUANT TO 807 KAR 5:011	
By <u>[Signature]</u>	
Executive Director	

FOR ENTIRE TERRITORY SERVED

Community, Town or City

P.S.C. KY. NO. 2000200

BLUE GRASS ENERGY
COOPERATIVE CORPORATION

Original SHEET NO. 122

CLASSIFICATION OF SERVICE

If the net metering registration shows that deliveries of energy in kWh from the Cooperative to the customer-generator exceed the deliveries of energy in kWh from the customer-generator to the Cooperative, the customer-generator shall pay the Cooperative for the net amount of energy delivered by the Cooperative after application of any Net Metering Credit carried forward from previous months at the rate applicable to its type or class of electric service.

The customer shall be responsible for payment of any applicable customer charge or other applicable charges.

At no time shall Blue Grass Energy be required to convert the Net Billing Credit to cash. If a customer-generator closes his account, no cash refund for residual Net Metering Credits shall be paid.

Net Metering Credits are not transferable between customers or locations.

LIABILITY INSURANCE

The customer-generator shall maintain general liability insurance coverage (through a homeowner's, commercial or other policy) against a loss arising from the use or operation of the customer-generator facilities with minimum limits of \$300,000 per occurrence/\$300,000 aggregate combined single limit for personal injury, bodily injury, including death and property damage. Prior to interconnection, the customer shall submit evidence of such insurance to Blue Grass Energy with the Application for Net Energy Metering. Blue Grass Energy's receipt of evidence of liability insurance does not imply an endorsement by the Cooperative of the terms and conditions of the coverage.

ADDITIONAL CONTROLS AND TESTS

Blue Grass Energy may install additional controls or meters, or conduct additional tests as it may deem necessary.

CANCELLED
MAY 03 2009
KENTUCKY PUBLIC
SERVICE COMMISSION

NET METERING SERVICE INTERCONNECTION REQUIREMENTS

All customer-generator equipment and installations must comply with the Blue Grass Energy's Technical Requirements for Interconnection, included as part of the Interconnection

DATE OF ISSUE February 25, 2005

DATE EFFECTIVE 4/1/2005

ISSUED BY [Signature]

TITLE SECRETARY (1)

BY AUTHORITY OF ORDER OF THE PUBLIC SERVICE COMMISSION

IN CASE NO. DATED

PUBLIC SERVICE COMMISSION OF KENTUCKY EFFECTIVE	
PURSUANT TO 807 KAR 5:011	
By <u>[Signature]</u>	
Executive Director	

FOR ENTIRE TERRITORY SERVED

Community, Town or City

P.S.C. KY. NO. 2000200

BLUE GRASS ENERGY
COOPERATIVE CORPORATION

Original SHEET NO. 123

CLASSIFICATION OF SERVICE

Agreement for Net Metering Service. The customer-generator's generating facility shall be designed and installed to operate in parallel with Blue Grass Energy's electric distribution system without adversely affecting the operation of equipment and service of the Cooperative and its customers and without presenting safety risks to Cooperative and customer personnel. The customer-generator will own and be responsible for operating the electrical generator and interconnection equipment. The customer-generator will be responsible for any damage done to the Cooperative's equipment due to a failure of the customer-generator's control, safety, or other equipment. The customer-generator will protect and save the Cooperative harmless from all claims for injury or damage to persons or property occurring on the customer-generator's premises, except where the said injury or damage can be shown to have been occasioned solely by negligence on the part of Blue Grass Energy.

APPLICATION AND AGREEMENTS

A customer-generator seeking to interconnect an Eligible Electric Generating Facility to the Company's distribution system must submit to the Company the following documents:

- a. Application for Net Energy Metering, completed and executed, including a one-line diagram showing the configuration of the customer-generator's facility;
- b. Interconnection Agreement for Net Metering Service, executed prior to interconnection; and,
- c. Customer Net Energy Service Agreement, executed prior to interconnection.

CANCELLED
MAY 03 2009
KENTUCKY PUBLIC
SERVICE COMMISSION

The Company may reject an application for demonstrable reliability or safety issues; however, the Company will work with the customer to resolve those issues to the extent practicable.

FEES AND CHARGES

As specified in the Application for Net Energy Metering, the customer-generator must pay a non-refundable application fee of \$50. Should Blue Grass Energy determine that an interconnection impact study is required, the Cooperative will advise the customer of the cost of conducting the study. Upon payment by the customer for cost of the study, Blue Grass Energy will proceed with the interconnection impact study to determine if the installation of the customer's electric generating facility will have a significant impact on the Cooperative's

DATE OF ISSUE February 25, 2005

DATE EFFECTIVE 4/1/2005

ISSUED BY [Signature]

TITLE President (SBO)(1)

BY AUTHORITY OF ORDER OF THE PUBLIC SERVICE COMMISSION

IN CASE NO. _____ DATED _____

By [Signature]
Executive Director

PUBLIC SERVICE COMMISSION
OF KENTUCKY
EFFECTIVE
PURSUANT TO 807 KAR 5:011

FOR ENTIRE TERRITORY SERVED

Community, Town or City

P.S.C. KY. NO. 2000200

BLUE GRASS ENERGY
COOPERATIVE CORPORATION

Original SHEET NO. 125

CLASSIFICATION OF SERVICE

BLUE GRASS ENERGY COOPERATIVE CORPORATION

Application for Net Energy Metering

This application should be completed as soon as possible and returned to the Cooperative Customer Service representative in order to begin processing the request.

This application is used by the Cooperative to determine the required equipment configuration for the Customer interface. Every effort should be made to supply as much information as possible.

OWNER/APPLICANT INFORMATION

Company: _____

Mailing Address: _____

City: _____ County: _____ State: _____ Zip _____

Code: _____

Phone

Number: _____ Representative: _____

Electric Account Number: _____

Service Location Address: _____

PROJECT DESIGN/ENGINEERING (as applicable)

Company: _____

Contact: _____

Mailing Address: _____

City: _____ County: _____ State: _____ Zip _____

Code: _____

Phone Number: _____

CANCELLED
MAY 03 2009
KENTUCKY PUBLIC
SERVICE COMMISSION

DATE OF ISSUE February 25, 2005

DATE EFFECTIVE 4/1/2005

ISSUED BY *[Signature]*

TITLE President (EQ) (1)

BY AUTHORITY OF ORDER OF THE PUBLIC SERVICE COMMISSION

IN CASE NO. _____ DATED _____

PUBLIC SERVICE COMMISSION
OF KENTUCKY
EFFECTIVE
PURSUANT TO 807 KAR 5:011
SECTION 5(1)

By *[Signature]*
Executive Director

FOR ENTIRE TERRITORY SERVED

Community, Town or City

P.S.C. KY. NO. 2000200

BLUE GRASS ENERGY
COOPERATIVE CORPORATION

Original SHEET NO. 126

CLASSIFICATION OF SERVICE

ELECTRICAL CONTRACTOR (as applicable)

Company: _____

Contact: _____

Mailing Address: _____

City: _____ County: _____ State: _____ Zip _____

Code: _____

Phone Number: _____

PV GENERATING SYSTEM

Size _____ kW

Expected Start-Up Date _____

INVERTER DATA (if applicable)

Manufacturer: _____ Model: _____

Kilowatt Rating: _____ Kilovolt-Ampere Rating: _____

Rated Power Factor (%): _____ Rated Voltage (Volts): _____ Rated Amperes: _____

Note: Attach all available calculations, test reports, and oscillographic prints showing inverter output voltage and current waveforms.

CANCELLED
MAY 03 2009
KENTUCKY PUBLIC
SERVICE COMMISSION

DESCRIPTION OF PROPOSED INSTALLATION AND OPERATION

Give a general description of the proposed installation, including a detailed description of its planned location and when you plan to operate the generator.

DATE OF ISSUE February 25, 2005

DATE EFFECTIVE 4/1/2005

ISSUED BY [Signature]

TITLE Secretary (1)

BY AUTHORITY OF ORDER OF THE PUBLIC SERVICE COMMISSION

IN CASE NO. _____ DATED _____

By [Signature]
Executive Director

PUBLIC SERVICE COMMISSION
OF KENTUCKY
EFFECTIVE
PURSUANT TO 807 KAR 5:011
Section 5(1)

FOR ENTIRE TERRITORY SERVED

Community, Town or City

P.S.C. KY. NO. 2000200

BLUE GRASS ENERGY
COOPERATIVE CORPORATION

Original SHEET NO. 127

CLASSIFICATION OF SERVICE

ADDITIONAL INFORMATION

In addition to the items listed above, please attach a detailed one-line diagram of the proposed facility, all applicable elementary diagrams, major equipment, (generators, transformers, inverters, circuit breakers, protective relays, etc.) specifications, test reports, etc., and any other applicable drawings or documents necessary for the proper design of the interconnection. Also describe the project's address or grid coordinates.

INTERCONNECTION COMPLIANCE & OWNER ACKNOWLEDGEMENT

- Customer shall be solely responsible for obtaining and complying with any and all necessary easements, licenses and permits, or exemptions, as may be required by any federal, state, local statutes, regulations, ordinances or other legal mandates.
- The customer shall submit documentation to the Cooperative that the system has been inspected and approved by the local permitting agency regarding electrical code requirements.
- Customer shall not commence parallel operation of the generating system until written approval of the interconnection has been given by the Cooperative.

CANCELLED
MAY 03 2009
KENTUCKY PUBLIC
SERVICE COMMISSION

DATE OF ISSUE February 25, 2005

DATE EFFECTIVE 4/1/2005

ISSUED BY [Signature]

TITLE President/CEO

BY AUTHORITY OF ORDER OF THE PUBLIC SERVICE COMMISSION

IN CASE NO. _____ DATED _____

PUBLIC SERVICE COMMISSION
OF KENTUCKY
EFFECTIVE

PURSUANT TO 807 KAR 5:011
SECTION 9(1)

By [Signature]
Executive Director

FOR ENTIRE TERRITORY SERVED

Community, Town or City

P.S.C. KY. NO. 2000200

BLUE GRASS ENERGY
COOPERATIVE CORPORATION

Original SHEET NO. 128

CLASSIFICATION OF SERVICE

SIGN OFF AREA

The customer agrees to provide the Cooperative with any additional information required to complete the interconnection. The customer shall operate his equipment within the guidelines set forth by the cooperative.

Applicant _____

Date _____

ELECTRIC COOPERATIVE CONTACT FOR APPLICATION SUBMISSION AND FOR MORE INFORMATION:

Cooperative contact: _____

Title: _____

Address: Blue Grass Energy Cooperative Corporation

P.O. Box 990

Nicholasville, KY 40340-0990

Phone: (859) 885-4191

Fax: (859) 885-2854

e-mail: _____

CANCELLED
MAY 03 2009
KENTUCKY PUBLIC
SERVICE COMMISSION

DATE OF ISSUE February 25, 2005

DATE EFFECTIVE 4/1/2005

ISSUED BY [Signature]

TITLE President (1)

BY AUTHORITY OF ORDER OF THE PUBLIC SERVICE COMMISSION

IN CASE NO. _____ DATED _____

By [Signature]
Executive Director

**PUBLIC SERVICE COMMISSION
OF KENTUCKY
EFFECTIVE**
PURSUANT TO 807 KAR 5:011
RESOLVED (1)

FOR ENTIRE TERRITORY SERVED
Community, Town or City

P.S.C. KY. NO. 2000200

BLUE GRASS ENERGY
COOPERATIVE CORPORATION

Original SHEET NO. 129

CLASSIFICATION OF SERVICE

**Interconnection Agreement for
Net Metering Service
Attachment to Cooperative Net Metering Tariff
for
Net Metering Service**

This agreement is between _____ (Customer-Generator) and
Blue Grass Energy Cooperative Corporation (Cooperative) and is effective as of _____.

Whereas, Customer-Generator owns or intends to install and own an electric energy generating
facility ("Facility") qualifying for "Net Metering" in accordance with Cooperative's currently
effective tariff as filed with the Kentucky Public Service Commission, to be located on Customer's
premises located at _____
for the purpose of generating electric energy; and

Whereas, Customer-Generator wishes to sell and Cooperative is willing to accept energy produced by
the Facility onto its distribution system;

CANCELLED
MAY 03 2009
KENTUCKY PUBLIC
SERVICE COMMISSION

Now, Therefore, the parties agree:

- 1. Generating Facility:** Customer-Generator's Facility shall consist of a solar photovoltaic
generating facility located on Customer-Generator's premises, with a total capacity of not
more than fifteen (15) kilowatts. Said facility will be interconnected and operated in parallel
with Cooperative's distribution system, and is intended primarily to offset part or all of
Customer-Generator's own electrical requirements.
- 2. Term:** This agreement shall commence when signed by both Cooperative and Customer-
Generator and terminate with any change in ownership, or by written agreement signed by
both parties.

DATE OF ISSUE February 25, 2005

DATE EFFECTIVE 4/1/2005 1, 2005

ISSUED BY *[Signature]*

TITLE President (1)

BY AUTHORITY OF ORDER OF THE PUBLIC SERVICE COMMISSION

IN CASE NO. _____ DATED _____

By *[Signature]*
Executive Director

PUBLIC SERVICE COMMISSION
OF KENTUCKY
EFFECTIVE
PURSUANT TO 807 KAR 5:011

FOR ENTIRE TERRITORY SERVED

Community, Town or City

P.S.C. KY. NO. 2000200

BLUE GRASS ENERGY
COOPERATIVE CORPORATION

Original SHEET NO. 130

CLASSIFICATION OF SERVICE

3. **Interconnection:** Customer-Generator shall provide the interconnection on Customer-Generator's side of the point of common coupling. At Customer-Generator's expense, Cooperative shall make reasonable modifications to Cooperative's system necessary to accommodate Customer-Generator's Facility. The cost for such modifications is due in advance of construction. The net metering system used by Customer-Generator shall include, at Customer-Generator's own expense, all equipment necessary to meet applicable safety, power quality, and interconnection requirements established by Cooperative's electric service requirements, the National Electrical Code, National Electrical Safety Code, the Institute of Electrical and Electronics Engineers (specifically IEEE Standard 1547, "Standard for Interconnecting Distributed Resources with Electric Power Systems"), and Underwriters Laboratories.

Cooperative's written approval of Customer-Generator's protection-isolation method to ensure generator disconnection in case of a power interruption from Cooperative is required before service is provided under this schedule.

4. **Impact Studies:** The Cooperative shall review the application for net metering service to determine if a detailed system impact study for the proposed project is required. If a system impact study is required, the customer-generator will be advised of the estimated cost of the study, and will be asked to agree to reimburse the Cooperative for these costs once the study is completed. When construction, modifications, or upgrades to the distribution system are required to interconnect the customer-generator's electric generating facility, the customer-generator is responsible for all costs incurred by the Cooperative. Once the customer-generator has reimbursed the Cooperative for any costs of system modifications (if required), the interconnection process will proceed.

5. **Disconnect Switch:** Customer-Generator shall furnish and install on Customer-Generator's side of the point of common coupling a safety disconnect switch which shall be capable of fully disconnecting the Customer-Generator's energy generating equipment from Cooperative's electric service. The disconnect switch shall be located adjacent to Cooperative's meters and shall be of the visible break type in a metal enclosure which can be secured by a padlock. The disconnect switch shall be accessible to Cooperative personnel at all times. Cooperative shall have the right to disconnect the Facility from Cooperatives supply at the disconnect switch when necessary to maintain safe electrical operating conditions or, if in Cooperative's sole judgement, the Facility at any time adversely affects Cooperative's operation of its electrical system or the quality of Cooperative's service to other Customers.

CANCELLED
MAY 03 2009
KENTUCKY PUBLIC
SERVICE COMMISSION

DATE OF ISSUE February 25, 2005

DATE EFFECTIVE 4/1/2005

ISSUED BY *[Signature]*

TITLE PURSUANT TO 807 KAR 5:011 SECTION 1(1)

BY AUTHORITY OF ORDER OF THE PUBLIC SERVICE COMMISSION

IN CASE NO. _____ DATED _____

PUBLIC SERVICE COMMISSION
OF KENTUCKY
EFFECTIVE
By *[Signature]*
Executive Director

FOR ENTIRE TERRITORY SERVED

Community, Town or City

P.S.C. KY. NO. 2000200

BLUE GRASS ENERGY
COOPERATIVE CORPORATION

Original SHEET NO. 131

CLASSIFICATION OF SERVICE

- 6. **Functional Standards:** Customer-Generator shall furnish, install, operate and maintain in good order and repair, all without cost to Cooperative, all equipment required for the safe operation of the Facility in parallel with Cooperative's system. This equipment shall include, but not limited to, equipment necessary to establish automatically and maintain synchronism with Cooperative's electric supply and a load break switching device that shall automatically disconnect the unit from Cooperative's supply in the event of overload or outage of Cooperative's supply. The facility shall be designed to operate within allowable voltage variations of Cooperative's system. The Facility shall not cause any adverse effects upon the quality of service provided to Cooperative's Customers.
- 7. **Installation and Maintenance:** Excepting only metering equipment owned by Cooperative, all equipment on Customer-Generator's side of the point of common coupling, including any required disconnect switch and synchronizing equipment, shall be provided, installed, and maintained in satisfactory operating condition by Customer-Generator, and shall remain the property and responsibility of Customer-Generator. Cooperative shall bear no liability for Customer-Generator's equipment or for consequences of its operation or mis-operation. For purposes of gathering research data, Cooperative may at its expense install and operate additional metering and data-gathering devices.
- 8. **Pre-operation Inspection:** Prior to interconnection, the Facility and associated interconnection equipment shall be inspected and approved by the state electrical inspector and any other governmental authority having jurisdiction.
- 9. **Access:** Authorized Cooperative employees shall have the right to enter upon Customer-Generator's property for the purposes of operating the disconnect switch and meters and making additional tests concerning the operation and accuracy of its meters.
- 10. **Merger:** This contract contains the entire agreement between Customer-Generator and Cooperative and may not be changed except by writing signed by both Customer-Generator and Cooperative.

In witness whereof, Cooperative and Customer-Generator have, by their duly authorized representatives, executed this agreement in duplicate as of the day and year first above written.

CANCELLED
MAY 03 2009
KENTUCKY PUBLIC
SERVICE COMMISSION

DATE OF ISSUE February 25, 2005

DATE EFFECTIVE 4/1/2005 1, 2005

ISSUED BY [Signature]

TITLE President (CBQ1)

BY AUTHORITY OF ORDER OF THE PUBLIC SERVICE COMMISSION

IN CASE NO. _____ DATED _____

By [Signature]
Executive Director

PUBLIC SERVICE COMMISSION
OF KENTUCKY
EFFECTIVE

PURSUANT TO 807 KAR 5:011

FOR ENTIRE TERRITORY SERVED

Community, Town or City

P.S.C. KY. NO. 2000200

Original SHEET NO. 132

BLUE GRASS ENERGY
COOPERATIVE CORPORATION

CLASSIFICATION OF SERVICE

BLUE GRASS ENERGY COOPERATIVE CORPORATION

BY: _____

TITLE: _____

DATE: _____

[CUSTOMER-GENERATOR NAME]

BY: _____

TITLE: _____

DATE: _____

CANCELLED
MAY 03 2009
KENTUCKY PUBLIC
SERVICE COMMISSION

DATE OF ISSUE February 25, 2005

DATE EFFECTIVE 4/1/2005 ~~1, 2005~~

ISSUED BY [Signature]

TITLE REGULATORY (01)

BY AUTHORITY OF ORDER OF THE PUBLIC SERVICE COMMISSION

IN CASE NO. _____ DATED _____

By [Signature]
Executive Director

PUBLIC SERVICE COMMISSION
OF KENTUCKY
EFFECTIVE
PURSUANT TO 807 KAR 5:011

FOR ENTIRE TERRITORY SERVED

Community, Town or City

P.S.C. KY. NO. 2000200

BLUE GRASS ENERGY
COOPERATIVE CORPORATION

Original SHEET NO. 133

CLASSIFICATION OF SERVICE

**Customer Net Energy Service Agreement
Attachment to the Net Metering Tariff
for
Net Metering Service**

1. Scope of Agreement

This Agreement states the conditions for net metering for customer-generators who own, operate, and maintain electrical generating facilities using solar energy designed to operate in parallel with the existing Cooperative's electrical distribution system and be primarily intended to offset part or all of the customer-generator's own electrical requirements.

2. Definitions

"Cooperative" shall mean Blue Grass Energy Cooperative Corporation, the retail electricity supplier serving the customer-generator.

"Customer-generator" means a customer who owns and operates an electric generating facility that is located on the customer's premises, for the primary purpose of supplying all or part of the customer's own electricity requirements.

"Electric generating facility" or "facility" means an electric generating facility that is connected in parallel with the electric distribution system; generates electricity using solar energy; and has a rated capacity of not greater than fifteen (15) kilowatts.

"Point of common coupling" means the point where a generating facility is connected to the Cooperative's distribution system.

3. Establishment of Point of Common Coupling

The Cooperative and the customer-generator agree to interconnect the Facility at the Point of Common Coupling in accordance with the Cooperative's rules, regulations, by-laws, rates, and tariffs (the "Rules") all of which are incorporated herein by reference.

CANCELLED
MAY 03 2009
KENTUCKY PUBLIC
SERVICE COMMISSION

DATE OF ISSUE February 25, 2005

DATE EFFECTIVE 4/1/2005

ISSUED BY [Signature]

TITLE Director (C01)

BY AUTHORITY OF ORDER OF THE PUBLIC SERVICE COMMISSION

IN CASE NO. _____ DATED _____

PUBLIC SERVICE COMMISSION OF KENTUCKY EFFECTIVE	
PURSUANT TO 807 KAR 5:011	
By <u>[Signature]</u>	Executive Director

FOR ENTIRE TERRITORY SERVED

Community, Town or City

P.S.C. KY. NO. 2000200

BLUE GRASS ENERGY
COOPERATIVE CORPORATION

Original SHEET NO. 134

CLASSIFICATION OF SERVICE

4. Interconnection

The customer-generator shall provide all equipment and perform all electrical interconnections on its side of the point of common coupling. The Cooperative will make such modifications to the Cooperative's distribution system as are reasonably necessary to accommodate the customer-generator's facility. The customer-generator shall be responsible for the costs of any such modifications and payment shall be due thirty (30) days in advance of construction. The customer-generator shall meet all requirements of the Interconnection Agreement for Net Metering Service and shall ensure, at its own expense, that the Facility includes all equipment necessary to meet applicable safety, power quality, and interconnection requirements established by Cooperative policies, the National Electric Code, National Electric Safety Code, the Institute of Electrical and Electronic Engineers, the Kentucky State Building Code, and Underwriters Laboratories. The customer-generator shall not commence parallel operation of the Facility until the Cooperative has inspected the Facility, including all interconnection equipment, and issued a written approval which includes a stipulated start date following which operations in parallel are permitted. The Cooperative maintains the right to verify proper installation and inspect the customer-generator's Facility to ensure continued safe operation of the electrical generating equipment and interconnection system at any time with reasonable advance notice to the customer-generator.

5. Installation, Operation and Maintenance of Facilities

The customer-generator shall furnish, install, operate and maintain in good order and repair, without cost to the Cooperative, all generating and interconnecting equipment required for the safe operation of the Facility in parallel with Cooperative's electrical distribution system. This includes, but is not limited to, equipment necessary to automatically disconnect the Facility from Cooperative's electrical distribution system in the event of overload or outage of Cooperative's distribution system.

Except for the bi-directional metering equipment owned by the Cooperative, all equipment on the customer-generator's side of the point of common coupling, including the required disconnect device, shall be provided and maintained in satisfactory operating condition by the customer-generator and shall remain the property and responsibility of the customer-generator.

The Facility must be designed to operate within allowable operating standards for Cooperative's electrical distribution system. The Facility must not adversely affect the

CANCELLED
MAY 03 2009
KENTUCKY PUBLIC
SERVICE COMMISSION

DATE OF ISSUE February 25, 2005

DATE EFFECTIVE 4/1/2005

ISSUED BY *[Signature]*

TITLE Resident (1)

BY AUTHORITY OF ORDER OF THE PUBLIC SERVICE COMMISSION

IN CASE NO. _____ DATED _____

PUBLIC SERVICE COMMISSION	
OF KENTUCKY	
EFFECTIVE	
PURSUANT TO 807 KAR 5:011	
Resident (1)	
By <i>[Signature]</i>	Executive Director

FOR ENTIRE TERRITORY SERVED

Community, Town or City

P.S.C. KY. NO. 2000200

BLUE GRASS ENERGY
COOPERATIVE CORPORATION

Original SHEET NO. 135

CLASSIFICATION OF SERVICE

quality or reliability of service provided to other Cooperative customers. The Cooperative shall have the right to periodically inspect the Facility.

The Cooperative will bear no responsibility for the installation or maintenance of the customer-generator's equipment or for any damage to property as a result of any failure or malfunction thereof. The Cooperative shall not be liable, directly or indirectly, for permitting or continuing to allow the interconnection of the Facility or for the acts or omissions of the customer-generator or the failure or malfunction of any equipment of the customer-generator's facility that causes loss or injury, including death, to any party.

6. Permits and Compliance with Codes, Standards, Rules, Regulations and Laws

The customer-generator shall file in a timely manner applications for all governmental authorizations and permits that are required for the Facility prior to construction of the Facility. Prior to the initial start-up date, the customer-generator shall obtain all governmental authorizations and permits required for operation of the Facility and shall maintain all required governmental authorizations and permits required for the Facility during the term hereof. The customer-generator shall provide copies of any such authorizations, permits and licenses to the Cooperative upon request. The customer-generator agrees to cause its Facility to be constructed in accordance with the rules and specifications equal to or better than those provided by the National Electrical Safety Code and the National Electrical Code, both codes approved by the American National Standards Institute, in effect at the time of construction.

The customer-generator shall maintain the electric generating system and interconnection facilities in a safe and prudent manner and in conformance with all applicable laws and regulations, and obtain any governmental authorizations and permits required for the construction and operation of the electric generating system and interconnection facilities. The customer-generator shall reimburse the Cooperative for any and all losses, damages, claims, penalties, or liability it incurs as a result of the customer-generator's failure to obtain or maintain any governmental authorizations and permits required for construction and operation of customer-generator's Facility.

CANCELLED
MAY 03 2009
KENTUCKY PUBLIC
SERVICE COMMISSION

7. Responsible Party

The customer-generator shall identify an individual (by name or title) who shall be the responsible party for operation and maintenance of the customer-generator's Facility.

DATE OF ISSUE February 25, 2005

DATE EFFECTIVE 4/1/2005

ISSUED BY *[Signature]*

TITLE PURSUANT TO 807 KAR 5:011

BY AUTHORITY OF ORDER OF THE PUBLIC SERVICE COMMISSION

IN CASE NO. _____ DATED _____

PUBLIC SERVICE COMMISSION OF KENTUCKY	
EFFECTIVE	
DATE EFFECTIVE	4/1/2005
PURSUANT TO 807 KAR 5:011	
SECTION 1	
By	<i>[Signature]</i>
Executive Director	

FOR ENTIRE TERRITORY SERVED
Community, Town or City

P.S.C. KY. NO. 2000200

BLUE GRASS ENERGY
COOPERATIVE CORPORATION

Original SHEET NO. 136

CLASSIFICATION OF SERVICE

individual shall be familiar with this Agreement as well as the provisions of any other agreements, rules or regulations that may apply.

8. Price, Payment and Credit

Net metered electricity shall be measured in accordance with standard metering practices established by the Cooperative.

a. Retail Sales to Member/Customer

If the net metering registration shows that deliveries of energy in kWh from the Cooperative to the customer-generator exceed the deliveries of energy in kWh from the customer-generator to the Cooperative, the customer-generator shall pay the Cooperative for the net amount of energy delivered by the Cooperative after application of any Net Metering Credit carried forward from previous months at the rate applicable to its type or class of electric service.

b. Energy Deliveries to Cooperative

If the net meter registration shows that the deliveries of energy in kWh from the customer-generator to the Cooperative exceed the deliveries of energy in kWh from the Cooperative to the customer-generator, the net meter registration in kWh will be carried forward to the next monthly billing period as a Net Metering Credit, expressed in kWh. If the customer-generator has carried over a Net Metering Credit from one or more prior months, the net meter registration from the current month shall be added to the Net Metering Credit that exists from prior months.

At no time shall the Cooperative be required to convert the Net Billing Credit to cash. If a customer-generator closes his account, no cash refund for residual Net Metering Credits shall be paid. Net Metering Credits are not transferable between customers or locations.

9. Impact Studies and System Modifications

As part of the process of accommodating the interconnection of the customer-generator's Facility to the Cooperative distribution system, the Cooperative shall conduct an initial review that includes a meeting/discussion with the customer-generator to review the application and scope of the project. The Cooperative may conduct internal studies of

CANCELLED
MAY 03 2009
KENTUCKY PUBLIC
SERVICE COMMISSION

DATE OF ISSUE February 25, 2005

DATE EFFECTIVE 4/1/2005

ISSUED BY [Signature]

TITLE President (1)

BY AUTHORITY OF ORDER OF THE PUBLIC SERVICE COMMISSION

IN CASE NO. _____ DATED _____

PUBLIC SERVICE COMMISSION
OF KENTUCKY
EFFECTIVE
PURSUANT TO 807 KAR 5:011
By [Signature]
Executive Director

FOR ENTIRE TERRITORY SERVED
Community, Town or City

P.S.C. KY. NO. 2000200

BLUE GRASS ENERGY
COOPERATIVE CORPORATION

Original SHEET NO. 137

CLASSIFICATION OF SERVICE

deemed necessary and at no additional cost to the customer-generator, such as but not limited to the review of capacity issues, system protection, aggregate harmonics analysis, aggregate power factor, and voltage regulation. The initial review will determine if a detailed system impact study for the proposed project is required.

If a system impact study is required, the customer-generator will be advised of the estimated cost of the study and shall reimburse the Cooperative for these costs once the study is completed. Only after the customer-generator has signed the Impact Study Agreement, will the study be conducted. The impact study shall evaluate, in detail, the impact of the proposed interconnection on the safety and reliability of the Cooperative's distribution system, and assesses whether any system modifications are required for interconnection. When construction, modifications, or upgrades to the distribution system are required to interconnect the customer-generator's electric generating facility, the customer-generator shall reimburse the Cooperative for all costs incurred. Once the customer-generator has reimbursed the Cooperative for any costs of system modifications (if required), the interconnection process will proceed.

10. Interruption or Reduction of Deliveries

The Cooperative may require the customer-generator to interrupt or reduce deliveries as follows: a) when necessary in order to construct, install, maintain, repair, replace, remove, investigate, or inspect any of the Cooperative's equipment or system; or, b) if the Cooperative determines in its sole discretion that curtailment, interruption, or reduction is necessary because of emergencies, abnormal system operation, faulted conditions, or compliance with prudent electrical practices. Whenever possible, the Cooperative shall give the customer-generator reasonable notice of the possibility that interruption or reduction of deliveries may be required.

Notwithstanding any other provision of this Agreement, if at any time the Cooperative determines that either:

- the generating facility may endanger Cooperative personnel, or,
- the continued operation of customer-generator's generating facility may endanger the integrity of Cooperative's electric system,

CANCELLED
MAY 03 2009
KENTUCKY PUBLIC
SERVICE COMMISSION

DATE OF ISSUE February 25, 2005

DATE EFFECTIVE 4/1/2005

ISSUED BY [Signature]

TITLE President/CEO (1)

BY AUTHORITY OF ORDER OF THE PUBLIC SERVICE COMMISSION

IN CASE NO. DATED

By [Signature]
Executive Director

PUBLIC SERVICE COMMISSION
OF KENTUCKY
EFFECTIVE

PURSUANT TO 807 KAR 5:011

FOR ENTIRE TERRITORY SERVED
Community, Town or City

P.S.C. KY. NO. 2000200

BLUE GRASS ENERGY
COOPERATIVE CORPORATION

Original SHEET NO. 138

CLASSIFICATION OF SERVICE

The Cooperative shall have the right to disconnect the customer-generator's Facility from the Cooperative's distribution system. The customer-generator's Facility shall remain disconnected until such time as the Cooperative is satisfied that the above-referenced condition(s) have been corrected.

11. Indemnity and Liability

The customer-generator hereby indemnifies and agrees to hold harmless and release the Cooperative and its officers, employees, contractors, and agents and each of the heirs, personal representatives, successors, and assigns of any of the foregoing (collectively, the "Indemnitees") from and against any and all losses, claims, damages, costs, demands, fines, judgments, penalties, obligations, payments, and liabilities, together with any costs and expenses (including without limitation attorneys' fees and out-of-pocket expenses and investigation expenses) incurred in connection with any of the foregoing, resulting from, relating to, or arising out of, or in connection with: a) any failure or abnormality in the operation of the customer's generating Facility or any related equipment; b) any failure of the customer-generator to comply with the standards, specifications, or requirements referenced in this Agreement which results in abnormal voltages or voltage fluctuations, abnormal changes in the harmonic content of the generating facility output, single phasing, or any other abnormality related to the quantity or quality of the power produced by the generating facility; c) any failure of the customer-generator duly to perform or observe any term, provision, covenant, agreement, or condition hereunder to be performed or by or on behalf of the customer or d) any negligence or intentional misconduct of customer related to the operation of the generating system or any associated equipment or wiring.

The customer-generator shall, upon the Cooperative's request, defend any suit asserting a claim covered by this indemnity. The customer-generator shall pay all costs (including reasonable attorneys' fees and costs) that may be incurred by the Cooperative in enforcing this indemnity.

12. Liability Insurance

The customer-generator shall maintain general liability insurance coverage (through a homeowner's, commercial, or other policy) against a loss arising from the use or operation of the customer-generator Facility with minimum limits of \$300,000 per occurrence/\$300,000 aggregate combined single limit for personal injury, bodily injury, including death and property damage. Prior to interconnection, the customer-generator shall submit evidence of such insurance to the Cooperative with the Application for Net Metered Electrical Generation

CANCELLED
MAY 03 2009
KENTUCKY PUBLIC
SERVICE COMMISSION

DATE OF ISSUE February 25, 2005

DATE EFFECTIVE 4/1/2005

ISSUED BY [Signature]

TITLE President/CEO

BY AUTHORITY OF ORDER OF THE PUBLIC SERVICE COMMISSION

IN CASE NO. _____ DATED _____

PUBLIC SERVICE COMMISSION OF KENTUCKY	
EFFECTIVE	
PURSUANT TO 807 KAR 5:011	
By <u>[Signature]</u>	
Executive Director	

FOR ENTIRE TERRITORY SERVED
Community, Town or City

P.S.C. KY. NO. 2000200

BLUE GRASS ENERGY
COOPERATIVE CORPORATION

Original SHEET NO. 139

CLASSIFICATION OF SERVICE

Service. The Cooperative's receipt of evidence of liability insurance does not imply an endorsement by the Cooperative of the terms and conditions of the coverage.

13. Equipment Certification

All inverters and associated interconnection equipment shall have been tested by a Nationally Recognized Testing Laboratory as having met the testing requirements of IEEE Standard 1547. Inverters and associated interconnection equipment listed for generating facility application (up to the size range covered by this Agreement and the Net Energy Metering tariff) listed on the following websites are hereby approved for application and installation under the terms of this Agreement and the terms of the Net Energy Metering Tariff:

List of Approved Equipment

- <http://www.dps.state.ny.us/SIRDevices.PDF>
- <http://www.fsec.ucf.edu/pvt/buyinstallpv/pvapprovals/approvals1.htm>
- http://www.consumerenergycenter.org/cgi-bin/eligible_inverters.cgi
- http://www.consumerenergycenter.org/cgi-bin/eligible_pvmodules.cgi

14. Testing and Testing Records

The customer-generator shall provide to the Cooperative all records of testing. These records shall include testing at the start of commercial operation and periodic testing thereafter. Factory testing of the protective systems shall be acceptable. In the case of a factory test, the customer-generator shall provide a written description and certification by the factory of the test, the test results, and the qualification of any independent testing laboratory. In addition, the settings of the equipment being installed are to be approved by the Cooperative prior to operating in parallel with the Cooperative's distribution system.

15. Rights of Access

The Cooperative may send an employee, agent, or contractor to the premises of the customer-generator at any time whether before, during, or after the time the Facility first produces energy to inspect the Facility and observe the Facility's installation, commissioning (including any testing), startup, operation, and maintenance. At any time the Cooperative, its employees, agents, or contractors shall have access to the customer-generator's premises for this or any other reasonable purpose in connection with the interconnection described in this Agreement, the Rules, or to provide service to its customers.

CANCELLED
MAY 03 2009
KENTUCKY PUBLIC
SERVICE COMMISSION

DATE OF ISSUE February 25, 2005

DATE EFFECTIVE 4/1/April 1, 2005

ISSUED BY [Signature]

TITLE PRESIDENT/CEO (1)

BY AUTHORITY OF ORDER OF THE PUBLIC SERVICE COMMISSION

IN CASE NO. _____ DATED _____

PUBLIC SERVICE COMMISSION
OF KENTUCKY
EFFECTIVE
PURSUANT TO 807 KAR 5:011
By [Signature]
Executive Director

BLUE GRASS ENERGY
COOPERATIVE CORPORATION

CLASSIFICATION OF SERVICE

16. Capacity Limit

This Agreement only applies to one or more photovoltaic generation facilities owned by the customer-generator and having a total installed capacity of up to 15 kW. If at any time the total site capacity of a generating facility previously covered under the terms of this Agreement exceed this capacity limit, the customer-generator is then in default of this Agreement. In this case, the provisions of Article 18, Default, will apply.

17. Disconnection of Facilities

The Cooperative maintains the right to disconnect, without liability, the customer-generator's Facility, and suspend service, in cases where continued operation may endanger persons, the Cooperatives' distribution system, or other property. If the operation of the customer-generator's Facility poses an immediate danger to persons or the public, or the safe and stable operation of the Cooperative's distribution system, the Facility may be disconnected from the distribution system with no prior notice. In other cases, the customer-generator will be provided with an opportunity to correct the situation prior to disconnection. During an unplanned outage of the distribution system serving the customer-generator's Facility, the Cooperative shall have the right to suspend service and disconnect the Facility from the system to effect repairs on the system; in this case, the Cooperative shall use its reasonable efforts to provide the customer-generator with reasonable prior notice.

The customer-generator shall disconnect the facility from the system, or the Cooperative shall have the right to disconnect the Facility from the system, in the case of customer-generator's default under the terms of this Agreement.

18. Default

Any one or more of the following acts or omissions of the customer-generator shall constitute an event of default hereunder:

- Failure to comply with the capacity limit of this Agreement;
- Failure to maintain the requisite levels of liability insurance in full force;
- Failure to install, operate and maintain the generating facility in accordance with all applicable standards, rules, regulations and laws;

REVOKED
MAY 03 2009
KENTUCKY PUBLIC
SERVICE COMMISSION

DATE OF ISSUE February 25, 2005

DATE EFFECTIVE 4/1/2005

ISSUED BY [Signature]

TITLE President (BQ1)

BY AUTHORITY OF ORDER OF THE PUBLIC SERVICE COMMISSION

IN CASE NO. DATED

PUBLIC SERVICE COMMISSION
OF KENTUCKY
EFFECTIVE

PURSUANT TO 807 KAR 5:011

By [Signature]
Executive Director

FOR ENTIRE TERRITORY SERVED
Community, Town or City

P.S.C. KY. NO. 2000200

BLUE GRASS ENERGY
COOPERATIVE CORPORATION

Original SHEET NO. 142

CLASSIFICATION OF SERVICE

- b. Interconnection Agreement for Net Metering Service, executed prior to interconnection.

The Cooperative may reject an application for demonstrable reliability or safety issues; however, the Cooperative will work with the customer to resolve those issues to the extent practicable.

21. Effective Term and Termination Rights

This Agreement becomes effective when executed by both parties and shall continue in effect until terminated. This Agreement may be terminated as follows: (a) customer-generator may terminate this Agreement at any time by giving the Cooperative at least sixty (60) days' written notice; (b) Cooperative may terminate upon failure by the customer-generator to continue ongoing operation of the generating facility; (c) either party may terminate by giving the other party at least thirty (30) days prior written notice that the other party is in default of any of the terms and conditions of the Agreement or the Rules or any rate schedule, tariff, regulation, contract, or policy of the Cooperative, so long as the notice specifies the basis for termination and there is opportunity to cure the default; (d) the Cooperative may terminate by giving the customer-generator at least thirty (30) days notice in the event that there is a material change in an applicable law, or any requirement of the Cooperative's wholesale electric suppliers or of any transmission utility, independent system operator or regional transmission organization having responsibility for the operation of any part of the system.

22. Severability

If any portion or provision of this Agreement is held or adjudged for any reason to be invalid or illegal or unenforceable by any court of competent jurisdiction, such portion shall be deemed separate and independent, and the remainder of this Agreement shall remain in full force and effect.

23. Amendment

This Agreement may be amended only upon mutual agreement of the parties, which amendment will not be effective until reduced to writing and executed by the parties.

CANCELLED
MAY 03 2009
KENTUCKY PUBLIC
SERVICE COMMISSION

DATE OF ISSUE February 25, 2005

DATE EFFECTIVE 4/1/2005

ISSUED BY [Signature]

TITLE RESIDENT (1)

BY AUTHORITY OF ORDER OF THE PUBLIC SERVICE COMMISSION

IN CASE NO. DATED

PUBLIC SERVICE COMMISSION
OF KENTUCKY
EFFECTIVE
PURSUANT TO 807 KAR 5:011
By [Signature]
Executive Director

FOR ENTIRE TERRITORY SERVED
Community, Town or City

P.S.C. KY. NO. 2000200

BLUE GRASS ENERGY
COOPERATIVE CORPORATION

Original SHEET NO. 143

CLASSIFICATION OF SERVICE

24. Independent Contractors

The parties hereto are independent contractors and shall not be deemed to be partners, employees, franchisees or franchisers, servants or agents of each other for any purpose whatsoever under or in connection with this Agreement.

25. Governing Law

This Agreement shall be governed by and construed in accordance with the laws of the State of Kentucky. Venue for any action arising under or in connection with this Agreement shall be in the Jessamine County Circuit Court.

26. Notices

Notices given under this Agreement are deemed to have been duly delivered if hand delivered or sent by United States certified mail, return receipt requested, postage prepaid, to:

(a) If to the Cooperative:

Blue Grass Energy Cooperative Corporation

P.O. Box 990

Nicholasville, KY 40340-0990

(b) If to the customer-generator:

CANCELLED
MAY 03 2009
PUBLIC SERVICE COMMISSION

The above-listed names, titles, and addresses of either party may be changed by written notification to the other.

DATE OF ISSUE February 25, 2005

DATE EFFECTIVE 4/1/2005

ISSUED BY [Signature]

TITLE President/CEO (1)

BY AUTHORITY OF ORDER OF THE PUBLIC SERVICE COMMISSION

IN CASE NO. _____ DATED _____

PUBLIC SERVICE COMMISSION
OF KENTUCKY
EFFECTIVE
PURSUANT TO 807 KAR 5:011
By [Signature]
Executive Director

FOR ENTIRE TERRITORY SERVED

Community, Town or City

P.S.C. KY. NO. 2000200

Original SHEET NO. 144

BLUE GRASS ENERGY
COOPERATIVE CORPORATION

CLASSIFICATION OF SERVICE

27. Assignment

This Agreement and all provisions hereof shall inure to and be binding upon the respective parties hereto, their personal representatives, heirs, successors, and assigns. Customer-generator shall not assign this Agreement or any part hereof without the prior written consent of the Cooperative, and such consent shall be within the sole discretion of the Cooperative. Any unauthorized assignment may result in default under the terms of this Agreement.

28. Signatures/Agreement Execution

IN WITNESS WHEREOF, the Parties have caused this Agreement to be signed by their respective duly authorized representatives.

BLUE GRASS ENERGY COOPERATIVE CORPORATION

BY: _____

TITLE: _____

DATE: _____

[CUSTOMER-GENERATOR NAME]

BY: _____

TITLE: _____

DATE: _____

CANCELLED
MAY 03 2009
KENTUCKY PUBLIC
SERVICE COMMISSION

PUBLIC SERVICE COMMISSION
OF KENTUCKY
EFFECTIVE
DATE OF ISSUE February 25, 2005 DATE EFFECTIVE 4/1/2005
ISSUED BY [Signature] TITLE PURSUANT TO 807 KAR 5:011
BY AUTHORITY OF ORDER OF THE PUBLIC SERVICE COMMISSION President/CEO
IN CASE NO. _____ DATED _____ By [Signature]
Executive Director

Direct Load Control of Water Heaters Program

Direct Load Control of Air-Conditioners Program

Purpose

The Direct Load Control of Water Heaters and Air Conditioners will encourage the reduction in growth of peak demand, enabling the Company to utilize its system more efficiently and defer the construction of new generation.

Availability

Both the Direct Load Control of Water Heaters Program and the Direct Load Control of Air Conditioners Program are available to residential customers in the service territories of Blue Grass Energy Cooperative Corporation. Availability may be denied where, in the judgment of the Blue Grass Energy Cooperative Corporation, installation of the load control equipment is impractical.

Eligibility

To qualify for these Programs, the participant must be located in the service territory of Blue Grass Energy Cooperative Corporation and have central air conditioning or heat pump units and/or 40-gallon (minimum) electric water heating units. The above appliances may be electrically cycled or interrupted in accordance with the rules of this Tariff.

Incentive - Direct Load Control of Water Heaters Program

Blue Grass Energy Cooperative Corporation will provide an incentive to the participants in this program. Blue Grass Energy Cooperative Corporation will credit the residential power bill of the participant \$10.00 per water heater each year. The participant will receive this credit regardless of whether the water heater is cycled during the month.

CANCELLED
AUG 01 2009
KENTUCKY PUBLIC
SERVICE COMMISSION

DATE OF ISSUE: October 13, 2008

DATE EFFECTIVE: ~~October 2, 2008~~

ISSUED BY

J. L. Smith

TITLE: Vice President

10/2/2008
PURSUANT TO 807 KAR 5:011
SECTION 9 (1)

Issued by authority of an Order of the Public Service Commission of Ke
Case No. 2008-00161 Dated October 2, 2008

By

Stephanie Hunter
Executive Director

Executive Director

Blue Grass Energy Cooperative Corporation

Incentive - Direct Load Control of Air-Conditioners Program

Blue Grass Energy Cooperative Corporation will provide an incentive to the participants in this program. The customer may select one of two alternatives. One, Blue Grass Energy Cooperative Corporation will credit the residential power bill of the participant \$20.00 per air conditioner (\$5 per summer months, June, July, August, and September). Two, alternatively, EKPC, on behalf of Blue Grass Energy Cooperative Corporation will provide and install at no cost a digital thermostat for the participant. The participant will receive one of these incentives regardless of whether the air conditioner or heat pump is controlled during the month.

Time Period for the Direct Load Control of Water Heaters Program

A load control switch will be placed on the water heater and may be electrically interrupted for a maximum time period of four hours.

East Kentucky Power Cooperative ("EKPC") will cycle the water heaters only during the hours listed below.

<u>Months</u>	<u>Hours Applicable for Demand Billing - EST</u>
October through April	6:00 a.m. to 12:00 noon 4:00 p.m. to 10:00 p.m.
May through September	10:00 a.m. to 10:00 p.m.

Time Period for the Direct Load Control of Air Conditioners

A load control device (switch or thermostat) will be placed on each central air conditioning unit or heat pump that will allow the operating characteristics of the unit to be modified (by cycling the unit off for periods of time up to 7.5 minutes of each 15- minute interval, or by adjusting the temperature setting on the thermostat up to tow degrees) to reduce demand on the system.

EKPC will control the air conditioning units and heat pumps only during its summer on-peak billing hours listed below.

<u>Months</u>	<u>Hours Applicable for Demand Billing - EST</u>
May through September	10:00 a.m. to 10:00 p.m.

CANCELLED
AUG 01 2009
KENTUCKY PUBLIC
SERVICE COMMISSION

PUBLIC SERVICE COMMISSION
OF KENTUCKY

DATE OF ISSUE: October 2, 2008
ISSUED BY: [Signature]
TITLE: Vice President & CFO

PURSUANT TO 807 KAR 5:011
SECTION 9 (1)

By [Signature]
Executive Director

DATE OF ISSUE: October 13, 2008
ISSUED BY: [Signature]
Issued by authority of an Order of the Public Service Commission of Kentucky in Case No. 2008-00161 Dated October 2, 2008

DATE EFFECTIVE: October 2, 2008
PURSUANT TO 807 KAR 5:011
SECTION 9 (1)

Terms and Conditions

1. If a participant decides to withdraw from the program(s) or change to another load control option, Blue Grass Energy Cooperative Corporation will endeavor to implement the change as soon as possible.

2. Prior to the installation of load control devices, Blue Grass Energy Cooperative Corporation may inspect the participant's electrical equipment to insure good repair and working condition, but Blue Grass Energy Cooperative Corporation shall not be responsible for the repair or maintenance of the electrical equipment.

3. EKPC, on behalf of Blue Grass Energy Cooperative Corporation will install, own, and maintain the load management devices controlling the participant's air conditioner or water heater. The participant must allow Blue Grass Energy Cooperative Corporation or their representative, reasonable access to install, maintain, inspect, test and remove load control devices. Inability of Blue Grass Energy Cooperative Corporation to gain access to the load management device to perform any of the above activities for a period exceeding 30 days may, at Blue Grass Energy Cooperative Corporation's option, result in discontinuance of credits under this tariff until such time as Blue Grass Energy Cooperative Corporation is able to gain the required access.

CANCELLED
AUG 01 2009
 KENTUCKY PUBLIC
 SERVICE COMMISSION

DATE OF ISSUE: October 13, 2008

DATE EFFECTIVE: October 2, 2008

ISSUED BY

J. Smallwood

TITLE: Vice President & CFO

Issued by authority of an Order of the Public Service Commission of Kentucky in

Case No. 2008-00161 Dated October 2, 2008

PUBLIC SERVICE COMMISSION
 OF KENTUCKY
 EFFECTIVE
 10/2/2008
 PURSUANT TO 807 KAR 5:011
 SECTION 9 (1)
 By *Stephanie Rumber*
 Executive Director